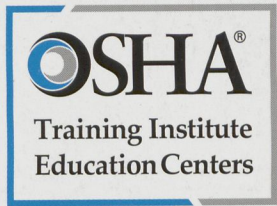
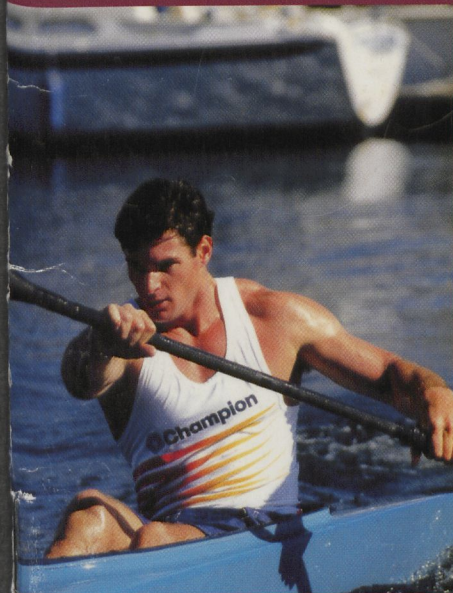


**CALIFORNIA STATE UNIVERSITY, DOMINGUEZ HILLS**  
COLLEGE OF EXTENDED AND INTERNATIONAL EDUCATION  
**2016 TRAINING SCHEDULE**



**THE ONLY  
LOS ANGELES BASED  
OSHA TRAINING CENTER**

**CONSTRUCTION  
GENERAL INDUSTRY  
MARITIME • OIL & GAS**



**CLIFF MEIDL**  
SPOKESPERSON FOR CSUDH  
OSHA EDUCATION CENTER



# GETTING TO CSUDH

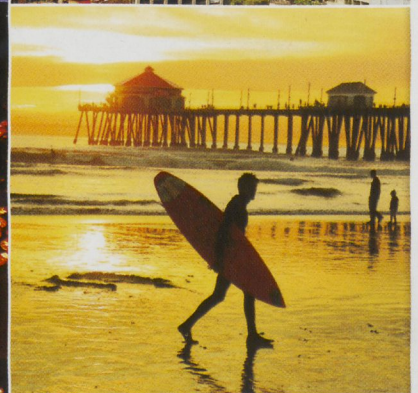
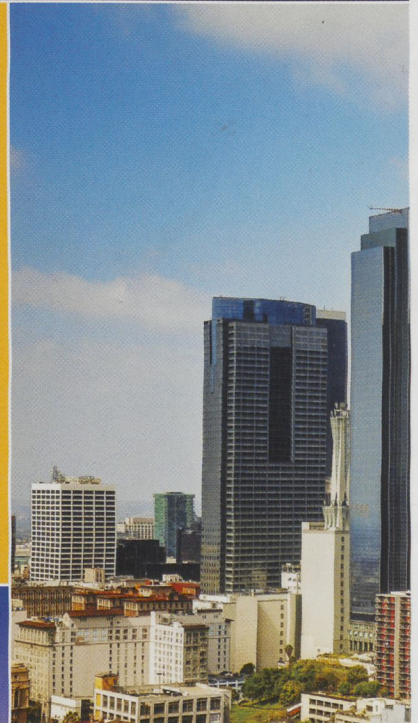


## Destination Location

California State University, Dominguez Hills (CSUDH) is located in the heart of beautiful Southern California, minutes from local beaches such as Hermosa, Redondo, Malibu and Laguna Beaches. CSUDH is minutes from downtown Los Angeles, world famous Disneyland, Hollywood, Beverly Hills, Knott's Berry Farm, Six Flag's Magic Mountain, Universal City Walk Hollywood and other famous Southern California attractions. CSUDH is home to the StubHub Center with its brand new soccer and tennis stadiums and home to the major league soccer teams Chivas USA and the LA Galaxy.

Discounted rates are available to groups of 15 students or more. Volume discounts are also available for companies and organizations sending five or more participants to one of our regular opened enrollment classes. **For more information please contact:**

Raul Guzman, Director, OSHA Training Institute Education Center  
Email: [rguzman@csudh.edu](mailto:rguzman@csudh.edu)  
Phone: (310) 243-3355



California State University, Dominguez Hills (pp #235) (VOL. 4, Issue #2) is published four times per year, once each in March, July, October and November. California State University, Dominguez Hills is published by the College of Extended and International Education, 1000 E. Victoria St., Carson, CA 90747. Application to Mail at Periodical Postage Prices is pending at Long Beach, California and additional mailing offices. POSTMASTER: send address corrections to California State University, Dominguez Hills, College of Extended and International Education, 1000 E. Victoria St., Carson, CA 90747.

California State University, Dominguez Hills was not printed or distributed at taxpayers' expense. Schedules and fees are subject to change.

# TABLE OF CONTENTS



- 1** Program At-A-Glance
- 2** OSHA Training Institute Education Center Locations
- 3** Become a Trainer - Outreach Training Program
- 5** On-Site Training
- 7** Certificate Programs
- 12** OSHA Numbered Courses
- 24** Specialty Courses
- 32** Trainer Courses
- 34** Awareness Level Courses
- 35** Additional Course Details
- 36** Financial Resources
- 37** Military Tuition Assistance
- 38** Campus Map
- 39** Other Courses
- 40** Cliff Meidl: Official Spokesperson

## CONTACT INFORMATION

### Program Inquiries

Phone: (310) 243-2425

Email: [osha@csudh.edu](mailto:osha@csudh.edu)

Web: [www.csudh.edu/osha](http://www.csudh.edu/osha)

### General Registration

Phone: (310) 243-3741 or (877) 464-4557

Email: [ceereg@csudh.edu](mailto:ceereg@csudh.edu)

### OSHA Contacts

Military Advisor

Phone: (310) 243-2189

Email: [ceemilitary@csudh.edu](mailto:ceemilitary@csudh.edu)

Lourdes Vargas, Program Coordinator, OSHA

Training Institute Education Center

Email: [lovargas@csudh.edu](mailto:lovargas@csudh.edu)

Raul Guzman, Director, OSHA Training Institute  
Education Center

Email: [rguzman@csudh.edu](mailto:rguzman@csudh.edu)

# BUILDING A SAFER WORLD TOGETHER

California State University Dominguez Hills houses the only Los Angeles-based OSHA Training Institute Education Center (OTIEC).

CSUDH OTIEC is authorized by the U.S. Department of Labor to deliver OSHA approved courses in occupational safety and health to safety professionals, workers, supervisors and employers. The OTIEC supports the OSHA training mission by offering a variety of safety courses and certificate programs and engaging in community outreach events. The OTIEC helps to ensure safe and healthful working conditions for workers and employers.

## **BECOME A TRAINER**

The OTIEC offers five OSHA authorized Train-the-Trainer programs in Construction, General Industry, Maritime Safety, Disaster Site Worker and Cal/OSHA Outreach Training (page 3).

## **ON-SITE TRAINING**

The OSHA Training Institute Education Center works closely with the business community to develop training programs that help companies remain in compliance with regulatory enforcement agencies.

CSUDH offers over 100 courses in occupational safety and health in both English and Spanish. Courses are tailored to meet industry specific requirements.

Our team of professionals is trained to provide the best service at an affordable price.

Contact us at 310-243-3355 or [rguzman@csudh.edu](mailto:rguzman@csudh.edu) for further details (page 5).

## **MILITARY VETERANS' DISCOUNT!**

California State University Dominguez Hills has a proud tradition of serving America's Military and offering a discount to all active and retired service members. A 10% discount must be applied at the time of registration and cannot be combined with any other offer (page 37).

## **CERTIFICATE PROGRAMS**

*Pre-registration is not required.*

These certificate programs prepare individuals to comply with the current OSHA and Cal/OSHA regulations based on the selection of courses.

- Advance Safety and Health Certificate (page 7)
- Healthcare Safety Certificate (page 8)
- Refinery Safety Technician Certificate (page 9)
- Certified Safety and Health Official (Not a Certification) (page 10)
- Public Sector Safety & Health Fundamentals (page 11)

## **CONVENIENT SCHEDULING FOR WORKING ADULTS**

Our courses are offered on weekdays, weeknights and on weekends to give you the flexibility to schedule courses that fit your lifestyle.

## FREE CAL/OSHA UPDATE OFFERED EVERY QUARTER

Once a quarter, the OSHA Education Center offers a free public seminar designed to keep safety professionals and local employers informed regarding safety and health compliance. To receive information about the next Cal/OSHA Update contact us at [osha@csudh.edu](mailto:osha@csudh.edu) or (310) 243-2425 or visit the website at [www.csudh.edu/osha](http://www.csudh.edu/osha).

## INTERNATIONAL TRAINING

Our team can travel across the world, and offer training in occupational safety and health in a variety of languages: Spanish, Chinese, Japanese, Korean, Portuguese, and Arabic. Contact us at 310-243-3355 or [rguzman@csudh.edu](mailto:rguzman@csudh.edu) for further details.

## FINANCIAL AID RESOURCES

Financial Resources available for those who qualify, please contact your local EDD or WIB office for more information (page 36).

## APPLY YOUR TRAINING TO A BACHELOR'S DEGREE

Through a partnership with Columbia Southern University, courses taken through the CSU Dominguez Hills OSHA Training Institute Education Center can be applied to an online Bachelor's Degree in Occupational Safety & Health. For further information, contact Columbia Southern directly at [www.columbiasouthern.edu/osha](http://www.columbiasouthern.edu/osha) or by calling (800) 977-8449. Students enrolled in or who have graduated from the CSUDH Advanced Safety and Health Certificate will receive a 10% tuition discount for courses taken through Columbia Southern University.

## CSUDH OSHA TRAINING INSTITUTE EDUCATION CENTER LOCATIONS

Eliminate the need to travel. CSUDH offers convenient locations throughout California, and Nevada, and is the only L.A. based authorized OSHA Training Institute Education Center.

### California State University, Dominguez Hills

1000 E. Victoria St., Carson, CA 90747  
310-243-2425

### Orange County CSUDH OSHA Training Institute Education Center

Taller San Jose  
810 N. Poinsettia, Santa Ana, CA 92701

### Anaheim CSUDH OSHA Training Institute Education Center

1400 N. Kellogg Drive, Anaheim, CA 92807

### Riverside CSUDH OSHA Training Institute Education Center

For locations go to [www.csudh.edu/osha](http://www.csudh.edu/osha)

### Las Vegas CSUDH OSHA Training Institute Education Center

For locations go to [www.csudh.edu/osha](http://www.csudh.edu/osha)

# BECOME A TRAINER

## FIVE OSHA OUTREACH TRAINER PROGRAMS AVAILABLE

The OSHA Training Institute Education Center at CSUDH offers five OSHA Authorized Outreach Training Programs in Construction, General Industry, Maritime Safety, Disaster Site Worker and Cal/OSHA Outreach Training. If you have the required experience (requirements differ for each program) this can be an excellent opportunity to become an Authorized Trainer for your company, or to build your own business. Consult [www.csudh.edu/osha](http://www.csudh.edu/osha) for further information.

### Construction Trainer

Five years of construction safety experience (two years of experience may be substituted with a college degree in Occupational Safety and Health, a Certified Safety Professional (CSP) or Certified Industrial Hygienist (CIH) designation, in the applicable training area). Trainers will be authorized to issue 10 hour and 30 hour OSHA Construction cards.

Required Courses: 510 & 500

### General Industry Trainer

Five years of General Industry safety experience, (two years of experience may be substituted with a college degree in occupational safety and health, a Certified Safety Professional (CSP) or Certified Industrial Hygienist (CIH) designation, in the applicable training area). Trainers will be authorized to issue 10 hour and 30 hour OSHA General Industry cards.

Required Courses: 511 & 501



### Maritime Trainer

Two years of experience in ship repair, shipbuilding, shipbreaking, maritime terminal or Longshoring and at least one of the following:

- 2 years of safety experience in any industry
- A safety degree or certification as: ASP, CSP, CIH, CMC, or CSHM

Trainers will be authorized to issue 6 different outreach training cards:

Marine Terminal	10 and 30 hour cards
Shipyards	10 and 30 hour cards
Long-shoring	10 and 30 hour cards

Required Courses: 5410 & 5400



## Disaster Site Worker Trainer

Three years of experience as an occupational safety and health trainer or one of the following:

- Journey level credentials in the construction trades
- Technical skills or credentials in construction work

Trainers will be authorized to issue 16 hour OSHA Disaster Site Worker cards.

Required Courses: 500, 501, 40-Hour HAZWOPER & 5600

## Cal/OSHA Outreach Training

Have at least one year of safety and health experience with an organization governed by Cal/OSHA standards. Be a current Authorized OSHA Outreach Trainer or become one within six (6) months after completing Cal/OSHA Partnership class.

### Construction Industry

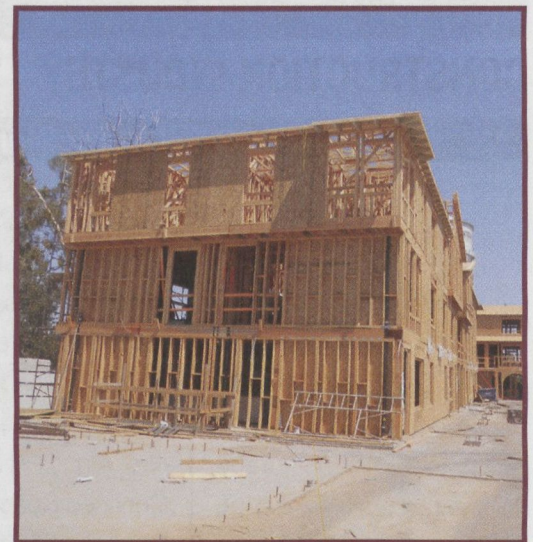
Required Course: 5109

Prerequisite Course: 500

### General Industry

Required Course: 5119

Prerequisite Course: 501



### Steps to enroll in OSHA 500/501/5400/5600:

1. Submit completed prerequisite verification form and proof of prerequisite course completion to [osha@csudh.edu](mailto:osha@csudh.edu), download at [www.csudh.edu/osha/forms.html](http://www.csudh.edu/osha/forms.html).
2. If approved, a permission number will be issued to you (allow 1-2 business days for processing).
3. Contact the registration office to provide permission number and payment for course (310-243-3741).

### Steps to enroll in OSHA 502/503/5402/5602:

1. Submit copy of Outreach Trainer Card to [osha@csudh.edu](mailto:osha@csudh.edu), indicate Update Course date and location you wish to attend (Please note: Outreach Trainer Card must be no more than 90 days expired at the start of the Update Course).
2. If approved, a permission number will be issued to you (allow 1-2 business days for processing).
3. Contact the registration office to provide permission number and payment for course (310-243-3741).

# ON-SITE TRAINING

The OSHA Training Institute Education Center at CSUDH works closely with the business community to develop training programs to help companies stay in compliance with regulatory enforcement agencies. CSUDH offers over 100 courses in occupational safety and health both in English and Spanish, courses are tailored to meet industry specific requirements.

Our team of professionals is trained to provide the best service possible at an affordable price. Our experts can expedite your request for on-site training.

Discounted rates are available to groups of 15 students or more. Volume discounts are also available for companies and organizations scheduling two or more on-site training.

**For more information, please contact us at 310-243-3355 or [rguzman@csudh.edu](mailto:rguzman@csudh.edu).**

## CONSTRUCTION INDUSTRY

T8 CCR	Course Name
1509 & 1510	10- & 30-Hour Construction Safety and Health Course
3648	Aerial Devices/Scissor Lift Safety
1529	Asbestos Safety Awareness Level
OSHA 1926.1101(k)(9)	Asbestos Class III Worker Training
3203	Back Injury Prevention Safety Lifting
1590-1596	Backhoe/Loader
3648	Boom (Bucket) Truck Safety
3400	First Aid, CPR & AED
5157 & 5158	Confined Space Entry
5157 & 5158	Confined Space Rescue
5006	Crane and Hoist Safety for Construction
3203	Defensive Driving
3314	Electrical Safety & Lockout/Tagout Program
3314 & NFPA 70E	Electrical Safety NFPA 70E Arc Flash
3416 & 1670	Fall Protection
6151	Fire Prevention/Extinguisher Use for Construction
NFPA51, 29 CFR 1910.252	Fire Watch Training for Hotwork
3556	Hand and Power Tool Safety
5099	Hearing Conservation
3395	Heat Illness Prevention
3668	Industrial Power Truck Operator Safety
3668	Industrial Power Truck Train-the-Trainer Program
1532	Lead Awareness Level Training
3203 & 3314	Machine Guarding Safety
5144	Respiratory Protection
5003	Rigging & Material Handling Safety
1637	Scaffolding Program
5144	Self Contained Breathing Apparatus
Labor Law	Sexual Harassment Course



**CONSTRUCTION INDUSTRY** Continued

<b>T8 CCR</b>	<b>Course Name</b>
1597-1599	Traffic Control Flagger, Barricades & Warning Signs
1540-1541	Trenching and Shoring (Competent Person)
3203	Violence in the Workplace
4799	Welding Safety

**GENERAL INDUSTRY**

<b>T8 CCR</b>	<b>Course Name</b>
1509 & 3203	10- & 30-Hour OSHA General Industry Worker Health & Safety
3648	Aerial Devices/Scissor Lift Safety
Labor Law	Americans with Disabilities Act
1529	Asbestos Safety, Awareness Level
3648	Boom (Bucket) Truck Safety
3400	First Aid, CPR & AED
5157 & 5158	Confined Space Entry
5157 & 5158	Confined Space Rescue
5006	Crane & Hoist Safety for General Industry
3202	Defensive Driving
Labor Law	Drug and Alcohol Substance Abuse Program
3314	Electrical Safety and Lockout/Tagout Program
3314 & NFPA 70E	Electrical Safety NFPA 70E Arc Flash
3220	Emergency Response Training
3413 & 3416	Fall Protection
3221 & 6151	Fire Prevention/Extinguisher Use
NFPA 51, CFR 1910.252	Fire Watch Training for Hot work
3356	Hand Tool and Portable Power Tool Safety
3668	Forklift Operator Safety
3668	Forklift Train-the-Trainer
5194	Hazard Communication
5194	Hearing Conservation
3395	Heat Illness Prevention
5191	Laboratory Safety
1532	Lead Awareness Level Training
3203 & 3314	Machine Guarding Safety
1509 & 3203	Regulatory & Safety Program Management for Supervisors
5144	Respiratory Protection
5003	Rigging & Material Handling Safety
Labor Law	Sexual Harassment
Labor Law	Violence in the Workplace
4799	Welding Safety

# ADVANCED SAFETY & HEALTH CERTIFICATE

## THE PROGRAM

This certificate responds to the needs of safety professionals for whom a certificate contributes to career advancement and professional recognition. Because the field of safety is different at every jobsite the certificate allows for flexibility in both the required and elective courses.

### Certificate Requirements

To earn the Advanced Safety & Health Certificate of Completion, the individual will have to successfully complete seven required courses. At least four of the courses, including the final two, must be completed through the CSUDH OTIEC. All courses must be completed within a 5 year period. Courses taken through other official OSHA Training Institute Education Centers can be used to fulfill up to three courses required for the Advanced Safety & Health Certificate of Completion.

### Construction Track – (4 Required Courses)

- OSX 910 OSHA 510 - OSHA Standards for the Construction Industry
- OSX 921 OSHA 521 - OSHA Guide to Industrial Hygiene
- OSX 961 OSHA 3095 - Electrical Standards
- OSX 905 OSHA 3115 - Fall Protection

### General Industry Track – (4 Elective Courses)

- OSX 911 OSHA 511 - Occupational Safety and Health Standards for General Industry
- OSX 921 OSHA 521 - OSHA Guide to Industrial Hygiene
- OSX 957 OSHA 2225 - Respiratory Protection
- OSX 959 OSHA 2264 - Permit-Required Confined Space Entry

### Electives for Construction and General Industry – (3 Required Courses)

- OSHA 511 - Occupational Safety and Health Standards for General Industry
- OSHA 500 - Trainer Course in Occupational Safety and Health Standards for the Construction Industry
- OSHA 501 - Trainer Course in Occupational Safety and Health Standards for General Industry
- OSHA 2015 - Hazardous Materials
- OSHA 2045 - Machinery and Machine Guarding Standards
- OSHA 2055 - Cranes in Construction
- OSHA 2225 - Respiratory Protection
- OSHA 2255 - Principles of Ergonomics
- OSHA 2264 - Permit-Required Confined Space Entry
- OSHA 3015 - Excavation, Trenching and Soil Mechanics
- OSHA 5119 - Cal/OSHA Standards for General Industry
- OSHA 5109 - Cal/OSHA Standards for the Construction Industry
- OSHA 5410 - Occupational Safety and Health Standards for the Maritime Industry
- OSHA 5400 - Trainer Course in Occupational Safety and Health Standards for the Maritime Industry
- OSHA 5600 - Disaster Site Worker Trainer Course
- OSHA 6000 - Collateral Duty Course for Other Federal Employees
- OSHA 7505 - Introduction to Incident (Accident) Investigation
- 40 Hour HAZWOPER
- EM 385-1-1
- Safety Audits and Inspections
- Cal/OSHA Legal Process
- Trainer Course – Aerial Lifts
- Trainer Course - Fall Protection
- Trainer Course - Forklift Safety
- Trainer Course - Rigging Safety

Visit [www.csudh.edu/osa/certificate-programs.html](http://www.csudh.edu/osa/certificate-programs.html) for certificate requirements

# CERTIFICATE IN HEALTHCARE SAFETY

## THE PROGRAM

The Certificate of Completion in Healthcare Safety is designed for the professional in the healthcare environment who is responsible for the safety of patients, employees, and visitors. A Certificate of Completion in Healthcare Safety will provide a solid foundation to assist in facilitating institutional compliance with OSHA regulations and meeting The Joint Commission (TJC) standards as they relate to the environment of care. Course content will specifically address conducting risk assessments, the Hospital Incident Command System (HICS), NFPA's Life Safety Code®, and The Joint Commission's Statement of Conditions™.

The Advanced Safety and Health Certificate of Completion provides a wide range of electives allowing individuals to focus on courses of preferred interest. The Certificate of Completion in Healthcare Safety provides a specific track, and is designed for the professional who works or seeks to obtain employment as a safety professional in the healthcare industry responsible for the safety of patients, employees, and visitors.

### Certificate Requirements

To earn the Certificate of Completion in Healthcare Safety, the individual will have to successfully complete seven required courses. At least five of the courses, including the final two, must be completed through the CSUDH OTIEC. All courses must be completed within a 5 year period. The official "certificate enrollment date" is the first day of the first CSUDH OTIEC course the participant wishes to count towards the Certificate of Completion. Courses taken through other official OSHA Training Institute Education Centers can be used to fulfill up to two courses required for the Certificate of Completion in Healthcare Safety.

### Required Courses

- OSX 911 OSHA 511 - OSHA Standards for General Industry
- OSX 985 OSHA 7200 - Bloodborne Pathogens
- OSX 920e OSHA 7210 - Pandemic Influenza & Transmissible Diseases (added)
- OSX 920w Hazardous Materials within the Healthcare Environment (added)
- OSX 920t Emergency Management within the Healthcare Environment (added)
- OSX 920v Fire & Life Safety within the Healthcare Environment (added)
- OSX 907 Basic Life Support –American Heart Association

Visit [www.csudh.edu/osha/certificate-programs.html](http://www.csudh.edu/osha/certificate-programs.html) for certificate requirements

# REFINERY SAFETY TECHNICIAN PREPARATION CERTIFICATE

## THE PROGRAM

This program consists of nine courses offered for CEU credit and is focused on the responsibilities of a safety technician in the refinery setting as a whole. Participants will be prepared with a solid foundation in order to assist refinery safety managers in facilitating OSHA regulations and meeting performance expectations of employers. Course content addresses refinery process overview and safety regulations, hazard recognition and conducting risk assessments, and safe work practices such as "hot" work and confined spaces in refineries. Participants who complete the certificate program will be able to perform typical functions of refinery safety staff assigned to work with maintenance subcontractors. The curriculum will prepare crafts and trades persons associated with gasoline refinery operations to enter refinery employment as safety technicians.

### Certificate Requirements

To earn the certificate participants will complete nine (9) required courses; at least five (5) courses must be completed through the CSUDH OTIEC. All courses must be completed within five (5) years. Courses taken through other official OSHA Training Institute Education Centers can be used to fulfill up to four (4) courses required for the Refinery Safety Technician Certificate of Completion.

### Required Prerequisites (Complete 1):

- OSHA 510 OSHA Construction Industry Standards
- OSHA 511 OSHA General Industry Standards

### Required (Complete 6):

- OSX 921 OSHA 521 - OSHA Guide to Industrial Hygiene
- OSX 959 OSHA 2264 - Permit Required Confined Space
- OSX 971 OSHA 7505 - Introduction to Accident Investigation
- OSX 995 Refinery HES Overview
- OSX 995 Refinery Hazard Control and Safe Work Practices
- OSX 995 Managing Safety Performance in Refineries

### Electives (Complete 2):

- OSX 955 OSHA 2015 - Hazardous Materials
- OSX 957 OSHA 2225 - Respiratory Protection
- OSX 958 OSHA 2255 - Principles of Ergonomics
- OSX 960 OSHA 3015 - Excavation, Trenching and Soil Mechanics
- OSX 905 OSHA 3115 - Fall Protection
- OSX 961 OSHA 3095 - Electrical Standards
- OSX 917 OSHA 5810 - Hazard Recognition for On-Shore Oil & Gas Exploration
- OSX 902 30 Hour OSHA General Industry

Visit [www.csudh.edu/osh/certificate-programs.html](http://www.csudh.edu/osh/certificate-programs.html) for certificate requirements

# CERTIFIED SAFETY AND HEALTH OFFICIAL

## THE PROGRAM

The Advanced Safety and Health Certificate provides a wide range of electives allowing individuals to focus on courses of preferred interest, whereas the CSHO Certificate of Completion provides a clear and defined path towards earning a professional certificate with a concentration in construction or general industry safety based on the selected track. Individuals seeking to complete this program must have a minimum of 5 years of experience overseeing safety and meet the prerequisite requirements of OSHA 500 or 501.

### Certificate Requirements

To earn the CSHO Certificate of Completion, the individual will have to successfully complete eight required courses. At least four of the courses, including the final two, must be completed through the CSUDH OTI Education Center. All courses must be completed within a 5 year period. Courses taken through other official OSHA Training Institute Education Centers can be used to fulfill up to four courses required for the CSHO Certificate of Completion.

#### Construction Track Required Courses:

- OSX 950 OSHA 500 - Trainer Course in OSHA Construction Industry Standards
- OSX 911 OSHA 511- OSHA Standards for General Industry
- OSX 921 OSHA 521 - OSHA Guide to Industrial Hygiene
- OSX 960 OSHA 3015 - Excavation, Trenching and Soil Mechanics
- OSX 939 OSHA 3095 - Electrical Standards
- OSX 905 OSHA 3115 - Fall Protection

#### Electives (Complete 2):

- OSX 955 OSHA 2015 - Hazardous Materials
- OSX 995 OSHA 2055 - Cranes in Construction
- OSX 957 OSHA 2225 - Respiratory Protection
- OSX 958 OSHA 2255 - Principles of Ergonomics
- OSX 959 OSHA 2264 - Permit-Required Confined Space Entry
- OSX 939 OSHA 5109 - Cal/OSHA Standards for Construction Industry

#### General Industry Required Courses

- OSX 951 OSHA 501 - Trainer Course in OSHA Standards for General Industry
- OSX 910 OSHA 510 - OSHA Standards for the Construction Industry
- OSX 921 OSHA 521 - OSHA Guide to Industrial Hygiene
- OSX 956 OSHA 2045 - Machinery and Machine Guarding Standards
- OSX 959 OSHA 2264 - Permit-Required Confined Space Entry
- OSX 961 OSHA 3095 - Electrical Standards

#### Electives (Complete 2):

- OSX 955 OSHA 2015 - Hazardous Materials
- OSX 957 OSHA 2225 - Respiratory Protection
- OSX 958 OSHA 2255 - Principles of Ergonomics
- OSX 905 OSHA 3115 - Fall Protection
- OSX 918 OSHA 5410 - OSHA Standards for the Maritime Industry
- OSX 940 OSHA 5119 - Cal/OSHA Standards for General Industry

Visit [www.csudh.edu/osha/certificate-programs.html](http://www.csudh.edu/osha/certificate-programs.html) for certificate requirements

# PUBLIC SECTOR SAFETY & HEALTH FUNDAMENTALS

## THE PROGRAM

The certificate program in Public Sector Safety & Health Fundamentals supports OSHA's mission by training public sector employees in occupational safety and health to reduce incident rates for workers in state and local governments. Participants have the opportunity to earn certificates for Construction and General Industry training.

This certificate is issued by the Occupational Safety and Health Administrations (Directorate of Training and Education).

### Construction Track Required Courses:

- OSHA 510 Occupational Safety and Health Standards for the Construction Industry
- OSHA 7500 Introduction to Safety and Health Management
- OSHA 7505 Introduction to Incident (Accident) Investigation

### Electives (Complete 4):

- OSHA 3095 Electrical Standards
- OSHA 7105 Evacuation and Emergency Preparedness
- OSHA 7110 Safe Bolting: Principles and Practices
- OSHA 7205 Health Hazard Awareness
- OSHA 7400 Noise in the Construction Industry
- OSHA 3115 Fall Protection
- OSHA 7405 Fall Hazard Awareness for the Construction Industry
- OSHA 3015 Excavation, Trenching and Soil Mechanics
- OSHA 7410 Managing Excavation Hazards
- OSHA 7845 Recordkeeping Rule Seminar

### General Industry Track Required Courses:

- OSHA 511 Occupational Safety and Health Standards for General Industry
- OSHA 7500 Introduction to Safety and Health Management
- OSHA 7505 Introduction to Incident (Accident) Investigation

### Electives (Complete 2):

- OSHA 2264 Permit-Required Confined Space Entry
- OSHA 7300 OSHA's Permit-Required Confined Space Standard
- OSHA 3095 Electrical Standards
- OSHA 7000 OSHA Training Guidelines for Safe Patient Handling
- OSHA 7005 Public Warehousing and Storage
- OSHA 7100 Introduction to Machinery and Machine Safeguarding
- OSHA 7105 Evacuation and Emergency Preparedness
- OSHA 7115 Lockout/Tagout
- OSHA 7200 Bloodborne Pathogen Exposure Control for Healthcare Facilities
- OSHA 7205 Health Hazard Awareness
- OSHA 7210 Pandemic Influenza Workplace Preparedness
- OSHA 7845 Recordkeeping Rule Seminar

CERTIFICATE PROGRAM:

**PUBLIC SECTOR**  
SAFETY & HEALTH FUNDAMENTALS

Visit [www.csudh.edu/osha/certificate-programs.html](http://www.csudh.edu/osha/certificate-programs.html) for certificate requirements

# OSHA NUMBERED COURSES

## OSHA 500 Trainer Course in OSHA Standards for the Construction Industry

OSX 950    CEUs: 3.0    Course Length: 4 Days    Fee: \$725

This course is designed for individuals interested in teaching the 10- and 30-hour construction safety and health Outreach Training Program. Using OSHA Construction Standards as a guide, this course places special emphasis on topics which are most hazardous.

This course allows the student to become a trainer in the OSHA Outreach Training Program, to conduct both 10- and 30-hour Construction Outreach classes. Students who wish to participate as authorized Outreach trainers must prepare a presentation on an assigned topic, and successfully pass a written exam at the end of the course.

Meeting Dates	Meeting Type	City
Feb. 1, 2, 3, 4	Weekday	Carson
Apr. 9, 10, 16, 17	Weekend	Santa Ana
Apr. 25, 26, 27, 28	Weekday	Riverside
May 23, 24, 25, 26	Weekday	Carson
June 13, 14, 15, 16	Weekday	Las Vegas

Meeting Dates	Meeting Type	City
Aug. 6, 7, 13, 14	Weekend	Carson
Aug. 15, 16, 17, 18	Weekday	Riverside
Oct. 10, 11, 12, 13	Weekday	Anaheim
Nov. 14, 15, 16, 17	Weekday	Las Vegas
Dec. 10, 11, 17, 18	Weekend	Carson

## OSHA 501 Training Course in OSHA Standards for General Industry

OSX 951    CEUs: 3.0    Course Length: 4 Days    Fee: \$725

This course is designed for individuals interested in teaching the 10- and 30-hour General Industry Outreach Training Program. Using OSHA General Industry Standards as a guide, this course places special emphasis on topics which are most hazardous.

This course allows the student to become a trainer in the OSHA Outreach Training Program, to conduct both 10- and 30-hour General Industry Outreach classes. Students who wish to participate as authorized Outreach trainers must prepare a presentation on an assigned topic, and successfully pass a written exam at the end of the course.

Meeting Dates	Meeting Type	City
Feb. 29, Mar. 1, 2, 3	Weekday	Las Vegas
Mar. 14, 15, 16, 17	Weekday	Carson
May 9, 10, 11, 12	Weekday	Riverside
June 4, 5, 11, 12	Weekend	Santa Ana

Meeting Dates	Meeting Type	City
Aug. 1, 2, 3, 4	Weekday	Carson
Sept. 24, 25, Oct. 1, 2	Weekend	Santa Ana
Nov. 28, 29, 30, Dec. 1	Weekday	Carson

# OSHA NUMBERED COURSES (CONT.)

## OSHA 502 Update for Construction Industry Outreach Trainers

OSX 952    CEUs: 2.2    Course Length: 3 Days    Fee: \$550

This course provides an update on OSHA Construction Standards, Policies, and Regulations. Participation in this course will further develop effective adult learning principles and interactive training techniques to clearly identify, define, and explain construction industry hazards and acceptable corrective measures.

This course is designed for Outreach Program Trainers who have completed OSHA #500 Trainer Course in Occupational Safety and Health Standards for the Construction Industry and are authorized trainers in the OSHA Outreach Training Program. Upon course completion students will have the ability to demonstrate continued professional development in their field as they continue to teach the 10- and 30-hour Construction Outreach Training Program classes.

Meeting Dates	Meeting Type	City
Feb. 27, 28, Mar. 5	Weekend	Carson
Mar. 21, 22, 23	Weekday	Las Vegas
May 2, 3, 4	Weekday	Carson
July 11, 12, 13	Weekday	Riverside

Meeting Dates	Meeting Type	City
Sept. 10, 11, 17	Weekend	Santa Ana
Oct. 3, 4, 5	Weekday	Las Vegas
Dec. 12, 13, 14, 15	Weekday	Carson

## OSHA 503 Update for General Industry Outreach Trainers

OSX 953    CEUs: 2.2    Course Length: 3 Days    Fee: \$550

This course provides an update on OSHA General Industry Standards, Policies, and Regulations. Participation in this course will further develop effective adult learning principles and interactive training techniques to identify, define, and explain construction industry hazards and acceptable corrective measures.

This course is designed for Outreach Program Trainers who have completed OSHA #501 Trainer Course in Occupational Safety and Health Standards for General Industry and are authorized trainers in the OSHA Outreach Training Program. Upon course completion students will have the ability to demonstrate continued professional development in their field as they continue to teach the 10- and 30-hour General Industry Outreach Training Program classes.

Meeting Dates	Meeting Type	City
Mar. 7, 8, 9	Weekday	Carson
June 11, 12, 18	Weekend	Carson

Meeting Dates	Meeting Type	City
July 25, 26, 27	Weekday	Las Vegas
Sept. 26, 27, 28	Weekday	Carson



# OSHA NUMBERED COURSES (CONT.)

## OSHA 510 OSHA Standards for the Construction Industry

OSX 910    CEUs: 3.0    Course Length: 4 Days    Fee: \$725

This course covers OSHA Standards, Policies, and Procedures in the construction industry. Topics include scope and application of the OSHA Standards, construction safety and health principles, and special emphasis is placed on the most hazardous conditions.

Upon course completion students will have the ability to define terms found in the OSHA Construction Industry Standards, identify hazards which occur in the construction industry, and determine appropriate standards, policies, and procedures.

Meeting Dates	Meeting Type	City	Meeting Dates	Meeting Type	City
Jan. 11, 12, 13, 14	Weekday	Carson	July 9, 10, 16, 17	Weekend	Carson
Mar. 12, 13, 19, 20	Weekend	Santa Ana	July 18, 19, 20, 21	Weekday	Riverside
Mar. 28, 29, 30, 31	Weekday	Riverside	Sept. 12, 13, 14, 15	Weekday	Anaheim
May 16, 17, 18, 19	Weekday	Carson	Nov. 5, 6, 12, 13	Weekend	Carson
June 6, 7, 8, 9	Weekday	Las Vegas	Nov. 7, 8, 9, 10	Weekday	Las Vegas

## OSHA 511 OSHA Standards for General Industry

OSX 911    CEUs: 3.0    Course Length: 4 Days    Fee: \$725

This course covers OSHA Standards, Policies, and Procedures in general industry. Topics include scope and application of the OSHA Standards, general industry safety and health principles, and special emphasis is placed on the most hazardous conditions.

Upon course completion students will have the ability to define terms found in OSHA General Industry Standards, identify hazards which occur in general industry, and determine appropriate standards, policies, and procedures.

Meeting Dates	Meeting Type	City	Meeting Dates	Meeting Type	City
Feb. 15, 16, 17, 18	Weekday	Carson	June 27, 28, 29, 30	Weekday	Carson
Feb. 22, 23, 24, 25	Weekday	Las Vegas	Aug. 20, 21, 27, 28	Weekend	Santa Ana
Apr. 11, 12, 13, 14	Weekday	Riverside	Oct. 31, Nov. 1, 2, 3	Weekday	Carson
Apr. 23, 24, 30, May 1	Weekend	Santa Ana	Dec. 5, 6, 7, 8	Weekday	Carson

# OSHA NUMBERED COURSES (CONT.)

## OSHA 521 OSHA Guide to Industrial Hygiene

OSX 921      CEUs: 3.0      Course Length: 4 Days      Fee: \$725

This course covers industrial hygiene practices and related OSHA regulations and procedures. Course topics include recognition, evaluation, and control of chemical, physical, biological and ergonomic hazards, Permissible Exposure Limits (PEL), and OSHA health standards.

The course features workshops in health hazard recognition, OSHA health standards and use of sampling equipment. Upon course completion students will have the ability to recognize basic industrial hygiene principles and practices, identify characteristics of common air contaminants, locate PELs, perform basic industrial hygiene calculations, and determine methods for hazard control and abatement.

Meeting Dates	Meeting Type	City
Jan. 23, 24, 30, 31	Weekend	Carson
Apr. 4, 5, 6, 7	Weekday	Anaheim
June 4, 5, 11, 12	Weekend	Carson

Meeting Dates	Meeting Type	City
Aug. 22, 23, 24, 25	Weekend	Carson
Oct. 15, 16, 22, 23	Weekend	Santa Ana

## OSHA 2015 Hazardous Materials

OSX 955      CEUs: 3.0      Course Length: 4 Days      Fee: \$725

This course covers OSHA General Industry Standards and other consensus standards that relate to the use of hazardous materials. Course topics include flammable and combustible liquids, compressed gases, LP-gases, and cryogenic liquids.

Upon course completion students will have the ability to assess compliance with OSHA hazardous materials standards, determine hazardous (classified) locations, and proper moving, storing, and handling of hazardous materials.

Meeting Dates	Meeting Type	City
Feb. 27, 28, Mar. 5, 6	Weekend	Santa Ana
May 2, 3, 4, 5	Weekday	Carson

Meeting Dates	Meeting Type	City
Sept. 19, 20, 21, 22	Weekday	Carson

## OSHA 2045 Machinery and Machine Guarding Standards

OSX 956      CEUs: 3.0      Course Length: 4 Days      Fee: \$725

This course covers the various types of common machinery, machine safe guards, and related OSHA regulations and procedures. Course topics include machinery processes, mechanical motions, points of operation, and common OSHA machine guarding violations.

Program highlights include the ability to recognize hazards and provide options for control and hazard abatement through machine safeguarding inspection workshops. Upon course completion, students will have the ability to describe common machine hazards and sources of energy, identify resources for assisting with machine guarding issues, and determine methods of control and hazard abatement, and selection of appropriate machine safe guards.

Meeting Dates	Meeting Type	City
Apr. 4, 5, 6, 7	Weekday	Carson

## OSHA 2055 Cranes in Construction

OSX 995      CEUs: 2.2      Course Length: 3 Days      Fee: \$650

This course covers the requirements for operation of cranes in the construction industry. Using OSHA's Cranes and Derricks Standard as a guide, this course covers hazards associated with crane assembly and disassembly, maintenance and inspection requirements, and employee qualifications.

Students will participate in workshops to reinforce concepts of safe crane operation. Upon course completion students will have the ability to identify the types of cranes and their components and attachments, determine safe operating conditions, and recognize common violations of OSHA Standards.

Meeting Dates	Meeting Type	City
Mar. 7, 8, 9	Weekday	Carson

Meeting Dates	Meeting Type	City
August 1, 2, 3	Weekday	Carson

# OSHA NUMBERED COURSES (CONT.)

## OSHA 2225 Respiratory Protection

OSX 957    CEUs: 3.0    Course Length: 4 Days    Fee: \$725

This course covers the requirements for the establishment, maintenance, and monitoring of a respiratory protection program. Course topics include terminology, OSHA Respiratory Protection Standards, NIOSH certification, respiratory protection programs, and medical evaluation requirements.

Program highlights include workshops on respirator selection, qualitative and quantitative fit testing, and the use of respiratory protection and support equipment. Upon course completion students will have the ability to identify and describe the elements of a respiratory protection program, the proper selection, use, and inspection of respiratory protection, protection factors, and evaluate compliance with OSHA Standards.

Meeting Dates	Meeting Type	City
Apr. 11, 12, 13, 14	Weekday	Carson

Meeting Dates	Meeting Type	City
Sept. 12, 13, 14, 15	Weekday	Carson

## OSHA 2255 Principles of Ergonomics

OSX 958    CEUs: 2.2    Course Length: 3 Days    Fee: \$650

This course covers the use of ergonomic principles to recognize, evaluate, and control workplace conditions that cause or contribute to musculoskeletal and nerve disorders. Course topics include musculoskeletal disorders and risk factors such as, temperature, repetition, lifting and patient transferring.

Course emphasis is placed on industrial case studies covering analysis and design of work stations and equipment workshops in manual lifting, and coverage of current OSHA compliance policies and guidelines. Upon course completion students will have the ability to recognize work-related musculoskeletal and nerve disorders, assess employer's ergonomic programs, and conduct ergonomic evaluations.

Meeting Dates	Meeting Type	City
Apr. 25, 26, 27	Weekday	Carson

Meeting Dates	Meeting Type	City
Oct. 17, 18, 19	Weekday	Anaheim

# OSHA NUMBERED COURSES (CONT.)

## **OSHA 2264** Permit-Required Confined Space Entry

OSX 959    CEUs: 2.2    Course Length: 3 Days    Fee: \$650

This course covers the safety and health hazards associated with permit-required confined space entry. Course topics include recognition of confined space hazards, identification of permit and non-permit required confined spaces, proper signage, and training requirements.

This course features workshops on permit entry classification, instrumentation, and program development. Upon course completion students will have the ability to identify permit and non-permit required confined spaces, reference the OSHA Permit-Required Confined Spaces Standard, conduct atmospheric testing, and implement a permit-required confined space program.

Meeting Dates	Meeting Type	City
Jan. 18, 19, 20	Weekday	Anaheim
June 4, 5, 11	Weekend	Carson

Meeting Dates	Meeting Type	City
Sept. 26, 27, 28	Weekday	Carson

## **OSHA 3015** Excavation, Trenching, and Soil Mechanics

OSX 960    CEUs: 2.2    Course Length: 3 Days    Fee: \$650

This course covers OSHA Standards related to excavation and trenching. Topics include practical soil mechanics and its relationship to the stability of shored and un-shored slopes. Introduction to various types of shoring, soil classification, and protective systems will be emphasized.

Testing methods are demonstrated and students participate in workshops in the use of instruments such as penetrometers, torvane shears, and engineering rods. Upon course completion students will have the ability to assess employer's compliance with the OSHA Excavation Standard, utilize soil testing methods to classify soil types, determine protective systems for excavation operations, and training requirements.

Meeting Dates	Meeting Type	City
Feb. 20, 21, 27	Weekend	Carson

Meeting Dates	Meeting Type	City
Aug. 8, 9, 10	Weekday	Anaheim

# OSHA NUMBERED COURSES (CONT.)

## OSHA 3095 Electrical Standards

OSX 961      CEUs: 3.0      Course Length: 4 Days      Fee: \$725

This course covers OSHA Electrical Standards and the hazards associated with electrical installations and equipment. Course topics include single- and three-phase systems, cord and plug-connected fixed equipment, grounding, ground fault circuit interrupters, and safety-related work practices.

Students will participate in workshops on the safe and correct use of electrical testing equipment. Upon course completion students will have the ability to understand the severity of electrical current on the human body, recognize and evaluate actual and potential electrical hazards, reference the applicable OSHA Standard, determine hazard abatement measures, and understand the proper use of electrical testing equipment.

Meeting Dates	Meeting Type	City
Apr. 16, 17, 23, 24	Weekend	Carson

Meeting Dates	Meeting Type	City
Oct. 24, 25, 26, 27	Weekday	Anaheim

## OSHA 3115 Fall Protection

OSX 905      CEUs: 2.2      Course Length: 3 Days      Fee: \$650

This course covers OSHA Fall Protection Standards for Construction and provides an overview of fall protection methods. Course topics include principles of fall protection, components and limitations of fall arrest systems, and OSHA Standards and policies regarding fall protection.

Upon course completion students will have the ability to assess compliance with the OSHA Fall Protection Standard, evaluate installed passive systems, fall arrest systems, and develop and implement fall protection plans. Students will participate in workshops that demonstrate the inspection and use of fall protection equipment, training requirements, and developing a fall protection program.

Meeting Dates	Meeting Type	City
Feb. 13, 14, 20	Weekend	Santa Ana
July 25, 26, 27	Weekday	Carson

Meeting Dates	Meeting Type	City
Oct. 31 Nov. 1, 2	Weekday	Anaheim

# OSHA NUMBERED COURSES (CONT.)

## OSHA 5029 Update for Construction Industry Outreach Trainers

OSX 929    CEUs: 0.7    Course Length: 1 Day    Fee: \$225

This course covers significant changes within Cal/OSHA Title 8 that affect the construction industry. Course topics include updates on the Cal/OSHA strategic plan, enforcement and consultation, procedural changes, and new & proposed Cal/OSHA Standards as they relate to construction industry.

This course updates OSHA #5109 Cal/OSHA Standards for the Construction Industry and continues the student's authorization to teach both the 10- and 30-hour Cal/OSHA Construction Industry Outreach Training Program. Upon course completion students will have the ability to identify recent changes and updates to Cal/OSHA structure, construction standards, and legal decisions affecting the construction industry.

Meeting Dates	Meeting Type	City	Meeting Dates	Meeting Type	City
May 5	Weekday	Carson	Sept. 18	Weekend	Santa Ana

## OSHA 5039 Update for General Industry Outreach Trainer

OSX 919    CEUs: 0.7    Course Length: 1 Day    Fee: \$225

This course covers significant changes within Cal/OSHA Title 8 that affect general industry. Course topics include updates on the Cal/OSHA strategic plan, enforcement and consultation, procedural changes, and new & proposed Cal/OSHA Standards as they relate to general industry.

This course updates OSHA #5119 Cal/OSHA Standards for General Industry and continues the student's authorization to teach both the 10- and 30-hour Cal/OSHA General Industry Outreach Training Program. Upon course completion students will have the ability to identify recent changes and updates to Cal/OSHA structure, general industry standards, and legal decisions affecting general industry.

Meeting Dates	Meeting Type	City	Meeting Dates	Meeting Type	City
Mar. 10	Weekday	Carson	Sept. 29	Weekday	Carson

# OSHA NUMBERED COURSES (CONT.)

## **OSHA 5109** Cal/OSHA Standards for the Construction Industry

OSX 939    CEUs: 3.0    Course Length: 4 Days    Fee: \$725

This course provides students with the ability to understand the relationship between OSHA and Cal/OSHA Standards, policies, and procedures. Students will identify hazards which occur in construction, and determine appropriate Cal/OSHA Standards (Title 8).

Course topics include Title 8 Construction Standards and compliance, training topics required in the 10 and 30-hour Outreach Training Programs, Injury and Illness Prevention Program, and Cal/OSHA training guidelines. Upon course completion Construction Outreach Trainers will be authorized to teach 10 and 30-hour Cal/OSHA Outreach Training Programs.

Meeting Dates	Meeting Type	City
Feb. 8, 9, 10, 11	Weekday	Carson
Apr. 23, 24, 30, May 1	Weekend	Carson
June 20, 21, 22, 23	Weekday	Carson

Meeting Dates	Meeting Type	City
Aug. 29, 30, 31, Sept. 1	Weekday	Anaheim
Oct. 24, 25, 26, 27	Weekday	Carson

## **OSHA 5119** Occupational Safety and Health Standards for General Industry

OSX 940    CEUs: 3.0    Course Length: 4 Days    Fee: \$725

This course provides students with the ability to understand the relationship between OSHA and Cal/OSHA Standards, policies, and procedures. Students will identify hazards which occur in general industry, and determine appropriate Cal/OSHA Standards (Title 8).

Course topics include Title 8 Construction Standards and compliance, training topics required in the 10 and 30-hour Outreach Training Programs, Injury and Illness Prevention Program, and Cal/OSHA training guidelines. Upon course completion General Industry Outreach Trainers will be authorized to teach 10 and 30-hour Cal/OSHA Outreach Training Programs.

Meeting Dates	Meeting Type	City
Mar. 21, 22, 23, 24	Weekday	Carson
July 30, 31, Aug. 6, 7	Weekend	Carson

Meeting Dates	Meeting Type	City
Oct. 17, 18, 19, 20	Weekday	Carson



# OSHA NUMBERED COURSES (CONT.)

## **OSHA 5400** Trainer Course in Occupational Safety and Health Standards for the Maritime Industry

OSX 965      CEUs: 3.0      Course Length: 4 Days      Fee: \$725

This course is designed for individuals interested in teaching the 10 and 30-hour Maritime Safety and Health Outreach Training Program. This course places special emphasis on topics which are the most hazardous in the maritime industry.

This course allows the student to become a trainer in the Outreach Training Program, to conduct 10 and 30-hour maritime classes in shipyard employment, marine terminals, and long shoring, and to issue cards to participants after verifying course completion. Students must successfully prepare a presentation on an OSHA Maritime Industry topic.

Meeting Dates	Meeting Type	City
June 20, 21, 22, 23	Weekday	Carson

## **OSHA 5410** Occupational Safety and Health Standards for the Maritime Industry

OSX 918      CEUs: 4.0      Course Length: 5 Days      Fee: \$795

This course covers OSHA policies, procedures, and standards for the maritime industry. Using the OSHA Maritime Standards as a guide, this course places special emphasis on those areas in the maritime industry which are most hazardous.

Upon course completion students will define maritime terms found in the OSHA Maritime Standards, identify hazards related to maritime industry and determine appropriate abatement controls.

Meeting Dates	Meeting Type	City
June 6, 7, 8, 9, 10	Weekday	Carson

## **HAZWOPER TRAIN THE TRAINER**

OSX 964      CEUs: 4.0      Course Length: 6 Days      Fee: \$795

This course provides training with instruction in Hazmat Operations and Emergency Response (HAZWOPER) as it relates to chemical and physical hazards. The course meets the requirements for training trainers under OSHA 29 CFR 1910.120 and CFR 1920.

Meeting Dates	Meeting Type	City
June 15, 16, 17, 18, 19	Weekday	Carson

# OSHA NUMBERED COURSES (CONT.)

## **OSHA 5600** Disaster Site Worker Trainer Course

OSX 963    CEUs: 3.0    Course Length: 4 Days    Fee: \$725

This course is designed for individuals interested in teaching OSHA #7600 Disaster Site Worker Course, intended for second responders. Using OSHA Standards as a guide, this course places special emphasis on topics which are most hazardous.

Students are provided the opportunity to practice knowledge and skills through discussion, planned exercises, demonstrations, and presentations. Lesson plans and training materials for the OSHA #7600 Disaster Site Worker Course are provided. Students who wish to participate as authorized Disaster Site Worker trainers must prepare a presentation on an assigned disaster site worker topic individually or as part of a group. Successful completion of this course authorizes students to become trainers in the Disaster Site Worker Outreach Training Program, to conduct the OSHA #7600 Disaster Site Worker Course, and to issue cards to participants after verifying course completion.

Meeting Dates	Meeting Type	City
July 18, 19, 20, 21	Weekday	Carson

## **OSHA 6000** Collateral Duty Course for Other Federal Agencies

OSX 964    CEUs: 3.0    Course Length: 4 Days    Fee: \$725

This course covers the OSH Act, Executive Order 12196, and the OSHA General Industry Standards, with special emphasis on areas in general industry which are most hazardous. This course is intended for federal agency collateral duty safety and health personnel

Upon course completion students will have the ability to define general industry terms, identify hazards that occur in general industry, determine appropriate standards and regulations for federal agencies, locate OSHA General Industry Standards, policies, and procedures, and describe the use of the OSHA General Industry Standards and regulations to effectively assist agency safety and health officers with inspection and abatement efforts.

Meeting Dates	Meeting Type	City
Apr. 18, 19, 20, 21	Weekday	Carson

# OSHA NUMBERED COURSES (CONT.)

## OSHA 7505 Introduction to Incident (Accident) Investigation

OSX 971    CEUs: 1.5    Course Length: 2 Days    Fee: \$395

This course covers an introduction to basic accident investigation procedures and describes accident analysis techniques. Course topics include reasons for conducting accident investigations, employer responsibilities related to workplace accident investigations, and a six step accident investigation procedure.

The target audience is the employer, manager, employee or employee representative who is involved in conducting accident and/or near-miss investigations. Upon course completion students will have the basic skills necessary to conduct an effective accident investigation at the workplace.

Meeting Dates	Meeting Type	City	Meeting Dates	Meeting Type	City
Feb. 25, 26	Weekday	Carson	Oct. 6, 7	Weekday	Anaheim
June 25, 26	Weekend	Carson			

## SPECIALTY COURSES

### 40 HOUR HAZWOPER

OSX 993    CEUs: 4.0    Course Length: 5 Days    Fee: \$795

This course provides instruction in Hazardous Waste Operations and Emergency Response (HAZWOPER) as it relates to chemical and physical exposures. This course satisfies the requirements for employee training under OSHA 29 CFR 1910.120 and 29 CFR 1926.

Meeting Dates	Meeting Type	City	Meeting Dates	Meeting Type	City
Apr. 18, 19, 20, 21, 22	Weekday	Carson	Oct. 3, 4, 5, 6, 7	Weekday	Carson
July 11, 12, 13, 14, 15	Weekday	Anaheim			

### HAZWOPER TRAIN THE TRAINER

OSX 994    CEUs: 4.0    Course Length: 5 Days    Fee: \$795

This course provides trainers with instruction in Hazardous Waste Operations and Emergency Response (HAZWOPER) as it relates to chemical and physical exposures. This course satisfies the requirements for training trainers under OSHA 29 CFR 1910.120 and CFR 1926.

Meeting Dates	Meeting Type	City
Aug. 15, 16, 17, 18, 19	Weekday	Carson

# SPECIALTY COURSES (CONT.)

## CONSTRUCTION HEALTH AND SAFETY TECHNICIAN (CHST) EXAMINATION REVIEW

OSX 976    CEUs: 2.2    Course Length: 3 Days    Fee: \$725

This course focuses on the elements of the Construction Health and Safety Technician (CHST) examination. A review of the four examination domains, risk management, workplace auditing, training, and mathematics, prepares participants for the CHST examination.

Meeting Dates	Meeting Type	City
Feb. 22, 23, 24	Weekday	Carson
July 9, 10, 16	Weekend	Santa Ana

Meeting Dates	Meeting Type	City
Nov. 7, 8, 9	Weekday	Carson

## ELECTRICAL SAFETY STANDARDS – NFPA 70E

OSX 967    CEUs: 0.7    Course Length: 1 Day    Fee: \$250

This course is designed for individuals who work on or near energized electrical systems. Course topics include updates to NFPA 70E Standards for Electrical Safety, and emphasis will be placed on topics that are the most hazardous.

The course focuses on safety-related work practices, maintenance requirement, and safety requirements for special equipment, as well as establishing an electrically safe work environment, hazard identification, risk assessment, and selecting appropriate Personal Protective Equipment (PPE).

Meeting Dates	Meeting Type	City
Jan. 29	Weekday	Carson
May 14	Weekend	Santa Ana

Meeting Dates	Meeting Type	City
Sept. 16	Weekday	Carson

## CAL/OSHA LEGAL PROCESS

OSX 914    CEUs: 1.6    Course Length: 2 Days    Fee: \$395

This course will cover fundamental topics that are necessary to understand how an appeal before the Occupational Safety and Health Appeals Board takes place. This course enables safety and health professionals to become familiar with Cal/OSHA's legal process.

Meeting Dates	Meeting Type	City
Mar. 28, 29	Weekday	Carson

Meeting Dates	Meeting Type	City
Aug. 8, 9	Weekday	Carson

## EM 385-1-1 CONSTRUCTION SAFETY HAZARD AWARENESS COURSE FOR CONTRACTORS

OSX 941      CEUs: 4.0      Course Length: 5 Days      Fee: \$795

This course is designed for contractors, military and government employees who enforce or must comply with the EM385-1-1 US Army Corps of Engineers Safety and Health requirements.

Attendees will learn the unique procedures established in Navy and US Army Corps of Engineers contracts, and the safety & health requirements of EM385-1-1 the US Army Corps of Engineers Safety & Health Requirements manual. Topics include: preparation of site-specific accident prevention plan (APP), intro to OSHA, site safety health officer's qualifications and responsibilities, activity hazard analysis development, site personnel training, incident response, jobsite auditing, & hazard communication.

Meeting Dates	Meeting Type	City	Meeting Dates	Meeting Type	City
Jan. 25, 26, 27, 28, 29	Weekday	Carson	June 27, 28, 29, 30, July 1	Weekday	Anaheim

## OSHA 30-HOUR CONSTRUCTION INDUSTRY

OSX 998      CEUs: 3.0      Course Length: 4 Days      Fee: \$650

This course provides training for workers and employers on the recognition, avoidance, prevention and abatement of safety and health hazards in construction industry. This program also provides information regarding workers' rights, employer responsibilities, and how to file a complaint. This course is more appropriate for supervisors or workers with some safety responsibility.

Meeting Dates	Meeting Type	City	Meeting Dates	Meeting Type	City
Feb. 29, Mar. 1, 2, 3	Weekday	Carson	Oct. 10, 11, 12, 13	Weekday	Santa Ana
June 18, 19, 25, 26	Weekend	Santa Ana			

## OSHA 30-HOUR CONSTRUCTION INDUSTRY (CAL/OSHA)

OSX 995      CEUs: 3.0      Course Length: 4 Days      Fee: \$650

This course is designed for workers and employers working in California under the jurisdiction of the California Occupational Safety and Health Administration.

Meeting Dates	Meeting Type	City	Meeting Dates	Meeting Type	City
Apr. 25, 26, 27, 28	Weekday	Carson	Aug. 8, 9, 10, 11	Weekday	Carson

# SPECIALTY COURSES (CONT.)

## OSHA 30-HOUR GENERAL INDUSTRY

OSX 902    CEUs: 3.0    Course Length: 4 Days    Fee: \$650

This course provides training for workers and employers on the recognition, avoidance, abatement, and prevention of safety and health hazards in general industry. The program also provides information regarding workers' rights, employer responsibilities, and how to file a complaint.

Meeting Dates	Meeting Type	City	Meeting Dates	Meeting Type	City
May 23, 24, 25, 26	Weekday	Carson	Aug. 1, 2, 3, 4	Weekday	Carson

## OSHA 30-HOUR GENERAL INDUSTRY (CAL/OSHA)

OSX 995    CEUs: 3.0    Course Length: 4 Days    Fee: \$650

This course is designed for workers and employers working in California under the jurisdiction of the California Occupational Safety and Health Administration.

Meeting Dates	Meeting Type	City
Jan. 25, 26, 27, 28	Weekday	Carson

## SCAFFOLD SAFETY

OSX 946    CEUs: 1.6    Course Length: 2 Days    Fee: \$395

This course presents occupational safety and health standards that apply to various types of scaffolding, such as: tube and coupler, suspended, rolling scaffolds, and aerial lifts. This course focuses on training requirements for employees, inspection criteria and hazard recognition.

Meeting Dates	Meeting Type	City	Meeting Dates	Meeting Type	City
Apr. 11, 12	Weekday	Carson	Oct. 8, 9	Weekend	Carson

## EMERGENCY MANAGEMENT WITHIN THE HEALTHCARE ENVIRONMENT

OSX 920t    CEUs: 0.7    Course Length: 1 Day    Fee: \$225

This curriculum is designed for individuals who work within the healthcare environment, and will focus on emergency management and disaster scenarios within that environment. This course will also evaluate The Joint Commission (TJC) accreditation requirements for emergency management and disaster preparedness.

Meeting Dates	Meeting Type	City	Meeting Dates	Meeting Type	City
Mar. 11	Weekday	Carson	Sept. 23	Weekday	Carson

## HAZARDOUS MATERIALS IN THE HEALTHCARE ENVIRONMENT

OSX 920w CEUs: 0.7 Course Length: 1 Day Fee: \$225

This course is designed for individuals who work within the healthcare environment, and will focus on the safe management and handling of hazardous materials and compressed gasses that are typically found within the healthcare environment.

Meeting Dates	Meeting Type	City	Meeting Dates	Meeting Type	City
Apr. 8	Weekday	Carson	Sept. 9	Weekday	Carson

## FIRE & LIFE SAFETY IN THE HEALTHCARE ENVIRONMENT

OSX 920v CEUs: 0.8 Course Length: 1 Day Fee: \$225

This course is designed for individuals who work within the healthcare environment, and will focus on fire and life safety issues that are typically found within that environment.

Meeting Dates	Meeting Type	City	Meeting Dates	Meeting Type	City
Feb. 26	Weekday	Carson	Aug. 26	Weekday	Carson

## 8 HOUR HAZWOPER REFRESHER

OSX 995 CEUs: 0.8 Course Length: 1 Day Fee: \$225

This course is required for hazardous waste workers who have previously completed a 40-hour HAZWOPER Training. This course provides an update on current health and safety issues, PPE, emergency procedures and new information on hazardous materials.

Meeting Dates	Meeting Type	City	Meeting Dates	Meeting Type	City
Apr. 15	Weekday	Carson	Sept. 9	Weekday	Anaheim

## INTRODUCTION TO RISK MANAGEMENT

OSX 973 CEUs: 1.6 Course Length: 2 Days Fee: \$395

This course covers the relationship between OSHA and risk management. Compliance recognition, safety awareness and the impact of risk management on organizations is emphasized. Course topics include basic elements of RMP, Worker's Compensation losses and risk management process.

Meeting Dates	Meeting Type	City
Aug. 10, 11	Weekday	Carson

# SPECIALTY COURSES (CONT.)

## REFINERY HAZARD CONTROL AND SAFE WORK PRACTICES

OSX 995    CEUs: 0.8    Course Length: 1 Day    Fee: \$225

This course covers general oil refinery hazard identification, evaluation and control methods including common safe work practices.

This course offers information on oil refinery hazards and how to differentiate and assess health & safety risks, the use of permits and common safe work practices to control hazards during hot work, work at heights, confined space and other refinery situations. It also covers process safety management hazards and controls and reviews general principles of isolation and cleanup prior to mechanical work.

Meeting Dates	Meeting Type	City	Meeting Dates	Meeting Type	City
Mar. 14	Weekday	Carson	Sept. 26	Weekday	Carson

## REFINERY HES OVERVIEW

OSX 995    CEUs: 0.8    Course Length: 1 Day    Fee: \$225

This course covers general refinery operations and associated health, safety and environmental hazards, as well as OSHA regulations and industry standards.

This course offers information on how refineries operate, and what hazards are encountered by the workforce, as well as risks to outside communities and selected government and consensus standards. It covers process, chemical and general physical safety hazards and provides a foundation for the subsequent courses in the Refinery Safety Specialist series. The intended audiences are craft and safety personnel who play a safety role in an oil refinery or similar process plant and who want to improve their effectiveness through a deeper understanding of the principals behind plant safe work practices and operations.

Meeting Dates	Meeting Type	City	Meeting Dates	Meeting Type	City
Mar. 10	Weekday	Carson	Sept. 22	Weekday	Carson

## SCAFFOLD SAFETY

OSX 946    CEUs: 1.6    Course Length: 2 Days    Fee: \$395

This course presents occupational safety and health standards that apply to various types of scaffolding, such as: tube and coupler, suspended, rolling scaffolds, and aerial lifts. This course focuses on training requirements for employees; inspection criteria and hazard recognition.

Meeting Dates	Meeting Type	City	Meeting Dates	Meeting Type	City
Apr. 11, 12	Weekday	Carson	Oct. 8, 9	Weekend	Carson



## BASIC LIFE SUPPORT FOR HEALTHCARE PROVIDERS

OSX 907    CEUs: 0.5    Course Length: 1 Day    Fee: \$125

This American Heart Association course is designed for healthcare professionals who need to know how to perform CPR, and respond to a wide variety of life-threatening emergencies. Course includes adult, child and infant rescue skills in out-of-hospital and in-hospital settings.

This course features key changes in basic life support reflecting new science from the 2010 American Heart Association Guidelines for Cardiopulmonary Resuscitation and Emergency Cardiovascular care. Other topics include critical concepts in high-quality CPR, The American Heart Association Chain of Survival, 1 and 2-rescuer CPR and AED for adults, children and infants, differences among adult, child and infant rescue techniques, bag-mask techniques, rescue breathing, and relief of choking for adults, children and infants.

Meeting Dates	Meeting Type	City
Mar. 19	Weekend	Carson

Meeting Dates	Meeting Type	City
July 22	Weekday	Carson

## QUARTERLY CAL/OSHA UPDATE

OSX 995    CEUs: 0.2    Course Length: 1 Day    Fee: \$25  
 NQUA 495    CEUs: None    Course Length: 1 Day    Fee: \$0

The CAL/OSHA quarterly updates provide an overview of the latest developments and most frequently cited violations in California. Our team of experts and guest speakers will provide valuable information to help you stay in compliance.

*Free section: \$0; "Information Only," No certificate awarded Pay Section: \$25; Includes CEUs and Certificate of Completion*

Meeting Dates	Meeting Type	City
Feb. 5	Weekday	Carson
May 13	Weekday	Carson

Meeting Dates	Meeting Type	City
Aug. 12	Weekday	Carson
Nov. 4	Weekday	Carson



# SPECIALTY COURSES (CONT.)

## MANAGING SAFETY PERFORMANCE IN REFINERIES

OSX 995    CEUs: 0.8    Course Length: 1 Day    Fee: \$225

This course covers safety plans and field auditing of safe work practices in refineries and introduces the concepts of behavioral based safety and human performance as they relate to incident prevention.

This course offers information on the development and execution of safety plans in refinery project and maintenance work. It also covers how to conduct safety inspections and audit safe work practice performance, how to evaluate and analyze audit and observation data, and techniques for presenting audit findings to management and the workforce. This course also introduces the concepts of behavioral safety programs and employee performance as they relate to the prevention of safety incidents in a refinery environment. The class discusses how to assess competency in safety and how to coach the worker and supervisor. The course also covers the safety professional's role in helping to manage injury incidents, from gathering important initial field data to assisting supervisors in communicating appropriate information and complying with OSHA requirements and managing site health and safety records.

Meeting Dates	Meeting Type	City
Mar. 15	Weekday	Carson

Meeting Dates	Meeting Type	City
Sept. 27	Weekday	Carson

## SAFETY AUDITS AND INSPECTIONS

OSX 995    CEUs: 2.2    Course Length: 3 Days    Fee: \$650

This course covers the requirements of Title 8 to identifying and evaluating work place hazards including scheduled periodic inspections to identify unsafe conditions and work practices. As part of this course, students will be required to conduct an on-site safety inspection using common inspection criteria and tools to identify potential job hazards.

This course will emphasize inspection techniques and skills required to perform constructive and effective jobsite audits such as communication, observation and inter-personal skills.

Meeting Dates	Meeting Type	City
Aug. 29, 30, 31	Weekday	Carson

## TRAINER COURSE – FALL PROTECTION

OSX 995 CEUs: 0.7 Course Length: 1 Day Fee: \$225

**Recommended Prerequisite:** OSHA 3115

This course is designed for individuals interested in training employees that may be exposed to fall hazards. Using OSHA Construction Standards as a guide, this course places special emphasis on CFR 1926.503(a) Requirements for Training and ANSI Z359.2 Minimum Requirements for a Managed Comprehensive Fall Protection Program.

Students will participate in workshops that demonstrate the inspection and use of fall protection equipment, training requirements, and development fall protection training programs.

Meeting Dates	Meeting Type	City	Meeting Dates	Meeting Type	City
Feb. 21	Weekend	Santa Ana	Nov. 3	Weekday	Anaheim
July 28	Weekday	Carson			

## TRAINER COURSE - CONFINED SPACE

OSX 995 CEUs: 0.7 Course Length: 1 Day Fee: \$225

**Recommended Prerequisite:** OSHA 2264

This course provides an overview of both OSHA and Cal/OSHA training requirements. This course will emphasize training techniques and available resources to conduct confined space training. Participants will receive training materials and resources to conduct training for entrant, attendant and competent person. Upon completion of this course, students will receive a CD with training materials and resources.

Meeting Dates	Meeting Type	City	Meeting Dates	Meeting Type	City
Jan. 21	Weekday	Anaheim	Sept. 29	Weekday	Carson
June 12	Weekend	Carson			

## TRAINER COURSE - AERIAL LIFT

OSX 995 CEUs: 1.6 Course Length: 1 Day Fee: \$225

**Recommended Prerequisite:** Operator Card

This course is designed to develop the skills needed to train aerial lift operators on four key concepts: proficiency demonstration, responsibility, safety and equipment familiarization. Training requirements, classification, safe operation, and adult learning techniques will be emphasized during this training.

Meeting Dates	Meeting Type	City	Meeting Dates	Meeting Type	City
Mar. 5, 6	Weekend	Carson	Aug. 25	Weekday	Anaheim

# TRAINER COURSES (CONT.)

## TRAINER COURSE - FORKLIFT SAFETY

OSX 949    CEUs: 1.6    Course Length: 2 Days    Fee: \$495

**Recommended Prerequisite:** Operator Card

This course is designed to develop the skills needed to train forklift operators in compliance with OSHA and Cal/OSHA standards. Classification, safe operation, and OSHA trainer regulations will be emphasized. This course will incorporate the use of Adult Learning Techniques.

Upon completion of this course, students will learn the differences between various lift trucks, how to reduce injuries to co-workers and operators, and minimize damage to property and cargo.

Meeting Dates	Meeting Type	City
Feb. 13, 14	Weekend	Carson
June 2, 3	Weekday	Carson

Meeting Dates	Meeting Type	City
Oct. 8, 9	Weekend	Santa Ana

## TRAINER TECHNIQUES

OSX 932    CEUs: 1.6    Course Length: 2 Days    Fee: \$395

This course is designed to enhance trainer skills and abilities to develop and deliver effective workplace safety presentations. This course will thoroughly review the ANSI standard 2490.1 criteria for accepted practices in safety, health and environmental training.

Students will be able to describe adult learning theories, List the qualities of an effective trainer, develop and design instructional materials and describe safety considerations when conducting safety training.

Meeting Dates	Meeting Type	City
May 9, 10	Weekday	Carson

## TRAINER COURSE – RIGGING SAFETY

OSX 995    CEUs: 2.2    Course Length: 3 Days    Fee: \$650

**Recommended Prerequisite:** OSHA 2055

This course covers advanced rigging principles, safety requirements, and key considerations for safe rigging. Students participating in this course will be able to identify appropriate rigging techniques, sling angles and the stresses imposed during rigging operations. Emphasize will be placed on national consensus standards for rigging to include equipment, inspections and rejection criteria.

Upon completion of this course students will be able to describe rigger qualifications and training requirements for both OSHA and Cal/OSHA.

Meeting Dates	Meeting Type	City
Aug. 22, 23, 24	Weekday	Carson

# AWARENESS LEVEL COURSES

## OSHA 7105 Evacuation and Emergency Planning

OSX 920a CEUs: 0.7 Course Length: 1 Day Fee: \$225

Meeting Dates	Meeting Type	City
Apr. 29	Weekday	Carson

## OSHA 7115 Lockout/Tagout

OSX 920k CEUs: 0.7 Course Length: 1 Day Fee: \$225

Meeting Dates	Meeting Type	City
May 6	Weekday	Carson

## OSHA 7200 Bloodborne Pathogens Exposure Control for Healthcare Facilities

OSX 985 CEUs: 0.7 Course Length: 1 Day Fee: \$225

Meeting Dates	Meeting Type	City
Feb. 19	Weekday	Carson

Meeting Dates	Meeting Type	City
July 8	Weekday	Carson

## OSHA 7205 Health Hazard Awareness

OSX 920j CEUs: 0.7 Course Length: 1 Day Fee: \$225

Meeting Dates	Meeting Type	City
May 18	Weekday	Carson

## OSHA 7210 Pandemic Influenza Preparedness

OSX 920e CEUs: 0.7 Course Length: 1 Day Fee: \$225

Meeting Dates	Meeting Type	City
Feb. 12	Weekday	Carson

Meeting Dates	Meeting Type	City
Oct. 21	Weekday	Carson

## OSHA 7845 Recordkeeping Rule Seminar

OSX 968 CEUs: 0.7 Course Length: 1 Day Fee: \$225

Meeting Dates	Meeting Type	City
May 17	Weekday	Carson

## OSHA 7005 Introduction to Public Warehousing

OSX 986 CEUs: 0.7 Course Length: 1 Day Fee: \$225

Meeting Dates	Meeting Type	City
Apr. 8	Weekday	Carson



Visit [www.csudh.edu/osha/courses.html](http://www.csudh.edu/osha/courses.html) for course details.

# ADDITIONAL COURSE DETAILS

Please visit individual course web pages for information on any required course materials, and courses requiring approval to enroll, <http://www.csudh.edu/osha/courses.html>

## RECERTIFICATION POINTS

BCSP and ABIH award recertification points for courses that earn academic credit (semester or quarter hours) and appear on a college transcript fall under Category 8 (College/University Courses) of the Recertification program and earn two Recertification points for each semester hour. Please visit BCSP and ABIH for more details.

## REGISTRATION

By Phone: (310) 243-3741 or (877) 464-4557

In Person: Extended Education Building 1100  
College of Extended and International Education  
1000 East Victoria Street Carson, CA, 90747

Office Hours: Monday–Thursday 8a.m.–8p.m., Friday 8a.m.–5p.m., Saturday 8a.m.–1:30p.m.

## PARKING

California State University Dominguez Hills  
Daily Parking: \$6.00  
Off-Campus Locations: Free

## REFUND POLICY

For more information, please visit <http://www.csudh.edu/ee/policies.shtml>

## NON-SCHEDULED COURSES

If a course you're interested does not have any scheduled meetings available, please call (310) 243-3355 for additional on-site training information.



## FINANCIAL RESOURCES AVAILABLE FOR THOSE WHO QUALIFY

Please contact your local office for more information or visit: [www.edd.ca.gov/office\\_locator](http://www.edd.ca.gov/office_locator)

### America's Job Centers of California

Carson South Bay Career Center  
Phone: 310-952-1762

LA South/Compton Workforce Service Office  
Phone: 310-223-2901

Gardena South Bay One Stop Business and  
Career Center  
Phone: 310-217-9579

Torrance Career Center  
Phone: 310-782-2101

Southeast LA - Watts WorkSource Center  
Phone: 323-563-5682

Youth Opportunity Center  
Phone: 562-570-4700

Career Transition Center  
Phone: 562-570-9675

South LA WorkSource Center  
Phone: 323-752-2115

Harbor WorkSource Center  
Phone: 310-732-5700

Hub Cities One-Stop Career Center  
Phone: 323-586-4700

Santa Ana WORK Center  
Phone: 714-565-2600

Anaheim - Workforce Services Office  
Phone: 714-518-2315

Anaheim Jobs  
Phone: 714-765-4350

Orange County One-Stop Center  
Phone: 949-341-8000

Orange County One-Stop Center  
Phone: 657-400-1389

Orange County One-Stop Satellite  
Center Buena Park  
Phone: 714-562-9200

Cerritos Career Center  
Phone: 562-402-9336

SELACO WIB Norwalk EDD Career Center  
Phone: 562-929-9107

Partners for Progress/SASSFA One-Stop Career  
Santa Fe Springs  
Phone: 562-946-2237

Career Transition Center  
Phone: 562-570-9675

# MILITARY TUITION ASSISTANCE

## WHERE MILITARY SERVICE COUNTS!

California State University Dominguez Hills has a proud tradition of serving America's Military and offering a discount to all active and retired service members. The 10% discount must be applied at the time of registration and cannot be combined with any other offer. Offer excludes OSHA 502, 503 and Quarterly Cal/OSHA Update.

### Educational Benefits

Montgomery GI Bill (Chapter 30)

Veterans' Vocational Rehabilitation Program (Chapter 31)

Post-Vietnam Era Veterans' Educational Assistance Program (Chapter 32)

Post 9-1-1 GI Bill (Chapter 33)

Survivors' and Dependents' Educational Assistance (Chapter 35)

Montgomery GI Bill Selective Service Education Assistance Program (REAP) (Chapter 1606)

Montgomery GI Bill Activated Reservist (Chapter 1607)

### Complete 5 Easy Steps

Step 1: Meet with Military Advisor

Step 2: Determine Eligibility

Step 3: Apply for Educational Benefits

Step 4: Meet with OSHA Coordinator

Step 5: Begin working towards the Advance Safety and Health Certificate

### Military Advisor

Phone: (310) 243-2189

Email: [ceemilitary@csudh.edu](mailto:ceemilitary@csudh.edu)

Please visit [www.csudh.edu/military](http://www.csudh.edu/military) for more information.







## Campus Map

### Legend

- Streets and Roads
- Pedestrian Access/Sidewalks
- Building I.D. Symbol
- Parking Ticket Dispenser
- \$5 - All Day Pass
- Information Center

### Building I.D. Number & Name

1. (SCC-1) SMALL COLLEGE COMPLEX 1
2. (SCC-2) SMALL COLLEGE COMPLEX 2
3. (SCC-3) SMALL COLLEGE COMPLEX 3
4. (SCC-4) SMALL COLLEGE COMPLEX 4
5. (SCC-5) SMALL COLLEGE COMPLEX 5
6. (SCC-6) SMALL COLLEGE COMPLEX 6
7. (SCC-7) SMALL COLLEGE COMPLEX 7
8. (SCC-8) SMALL COLLEGE COMPLEX 8
9. (SCC-9) SMALL COLLEGE COMPLEX 9
10. (SCC-10) SMALL COLLEGE COMPLEX 10
11. (SCC-11) SMALL COLLEGE COMPLEX 11
13. (SCC-13) SMALL COLLEGE COMPLEX 13
14. (COE) SCHOOL OF EDUCATION
20. (LIB) LEO F. CAIN LIBRARY
23. (WH) JAMES L. WELCH HALL
25. (SHC) STUDENT HEALTH CENTER
30. (LSU) LOKER STUDENT UNION
36. (SBS) SOCIAL AND BEHAVIORAL SCIENCES
40. (LCH) LACORTE HALL
45. (UT) UNIVERSITY THEATRE
50. (NSM) NATURAL SCIENCES AND MATHEMATICS
60. (GYM) GYMNASIUM
61. (FH) FIELD HOUSE
63. (SP) SWIMMING POOL
70. (BLDG A) PUEBLO DOMINGUEZ # SH-1
71. (BLDG X) PUEBLO DOMINGUEZ # SH-2
80. (PP) PHYSICAL PLANT
87. (CP) CENTRAL PLANT
100. (SAC-1) SOUTH ACADEMIC COMPLEX 1
102. (SAC-2) SOUTH ACADEMIC COMPLEX 2
103. (SAC-3) SOUTH ACADEMIC COMPLEX 3
104. (SAC-4) CALIFORNIA ACADEMY OF MATHEMATICS AND SCIENCE LABS
105. (HC) HUGHES ATHLETIC AND EDUCATION
106. (EE) EXTENDED EDUCATION CENTER
107. (CAMS) CALIFORNIA ACADEMY OF MATHEMATICS AND SCIENCE
111. BASEBALL/SOFTBALL STORAGE
116. (EAC) EAST ACADEMIC COMPLEX
120. (CDC) CHILD DEVELOPMENT CENTER
121. (ITC) INFANT TODDLER CENTER



# OTHER PROGRAMS

## DID YOU KNOW THAT CSUDH EXTENDED EDUCATION OFFERS...

### Masters Degree Programs

- Master of Arts Humanities (distance learning)
- Master of Business Administration (online)
- Master of Public Administration (online)
- Master of Science Health Sciences, Orthotics & Prosthetics Option
- Master of Science Nursing (online)
- Master of Science Quality Assurance (online)
- Master of Social Work

### Bachelors Degree Programs

- Bachelor of Science Applied Studies (online)
- Bachelor of Science Nursing (online)
- Bachelor of Science Quality Assurance (online)

### Open University

- CSUDH credit courses available without admittance to the university

### Credit Certificate Programs

- Alcohol & Drug Counseling
- Assistive Technology (online)
- Communication Sciences & Disorders
- Community College Teaching (online or on campus)
- Production & Inventory Control (online)
- Purchasing (online)
- Sport and Fitness Psychology (online)

### Certificates of Completion

- Construction Project Management
- Global Logistics
- Grant Writing & Administration
- Human Resource Management/Advanced Human Resource Management
- Management & Supervision
- Medical Insurance Billing
- Meeting & Event Planning
- Paralegal Studies (online)
- Personal Fitness Trainer
- Pharmacy Technician
- Project Management
- Technical Writing (online)
- Web Design

### Test & Certification Preparation Programs

- (EKG) Technician Exam Prep
- California Basic Educational Skills Test (CBEST)
- California Subjects Exams for Teachers (CSET)
- Graduate Management Admission Test (GMAT)
- Graduate Record Examination (GRE)
- Professional Meeting Planner (PMP) Certification Exam Prep
- Project Management Professional (PMP) Exam Prep
- Reading Instruction Competence Assessment (RICA)
- Pharmacy Technician Certification Board (PTCB) Exam Prep
- Society for Human Resource Management (SHRM) Certification Prep

### Special Programs

- OSHER Lifelong Learning Institute (OLLI)
- Spring Intersession
- Summer Camps
- Winter Session
- Young Scholar

**For further information:**

[www.csudh.edu/ee](http://www.csudh.edu/ee)  
[learn@csudh.edu](mailto:learn@csudh.edu)

## CLIFF MEIDL: OFFICIAL SPOKESPERSON

California State University at Dominguez Hills' OTIEC program is delighted to welcome an accomplished two-time Olympic kayaker and former Team USA Flag Bearer as our new spokesperson for our OSHA Training Institute Education Center (OTIEC). Cliff Meidl has an inspiring story of overcoming adversity that launched him to pursue a career in safety advocacy and to become an ambassador within the construction and occupational health & safety industries.

In 2014, Cliff successfully completed a total of seven OSHA Training courses in our CSUDH OTIEC program. As a result, he was awarded the Advanced Safety and Health Certificate.

As a competitor in both the 1996 and 2000 Olympic Games, Meidl received one of the highest honors for an Olympian. He was selected by his teammates to carry the USA flag into the Opening Ceremony at the Sydney Games. Nearly two billion viewers around the world were watching this young man from Manhattan Beach, California. Many of these viewers learned of Meidl's courageous rehabilitation and recovery from a tragic construction accident that occurred when he was just 20 years of age.

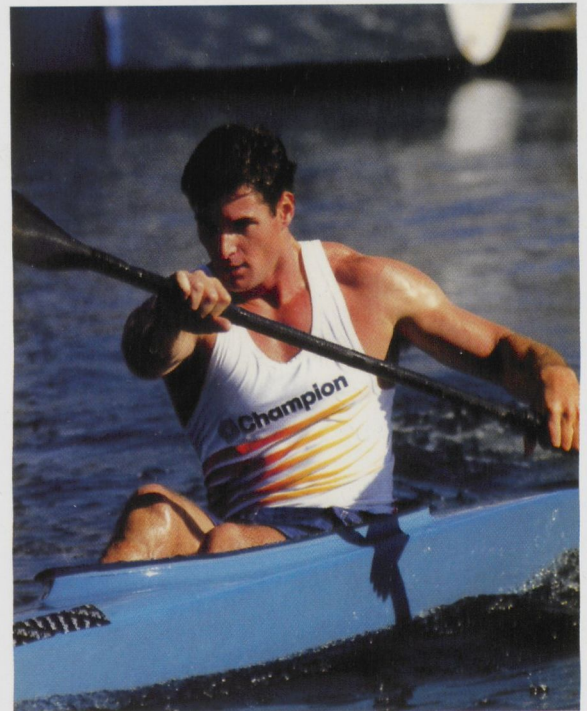
Meidl was operating a jackhammer and made contact with three live buried electrical cables sending nearly 30,000 volts of electricity through his body. The severe electrical shock stopped Meidl's heart as he experienced cardiac arrest. Fortunately, fast-acting first responders were able to save his life. Meidl also suffered severe electrical burns and exit wounds over fifteen percent of his body, but most of the damage was to both of his knees.

Meidl endured several medical procedures over the next fifteen months and it took three years for him to be able to walk unassisted. The accident disintegrated one-third of both of his knees and severely burned his back, head, and foot. In addition, the accident nearly forced the amputation of his legs.

After years of dedication to the sport of Olympic flat-water kayaking, Cliff began to make his dream of becoming an Olympian a reality. In 1995, Meidl won a gold, silver and bronze medal in his kayaking events at the U.S. Olympic Festival in Denver, which became a launching pad toward his ultimate dream of becoming an Olympian.

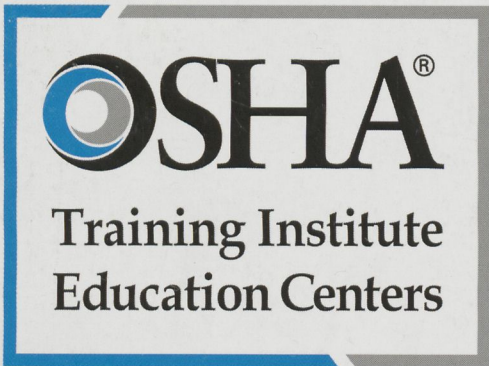
According to Dean J. Kim McNutt, "we are proud to have Cliff successfully complete his OSHA training with the College of Extended and International Education. I look forward to having him serve as an ambassador for the OTIEC, discussing the importance of workplace safety."

by Thomas Mills



Visit [www.csudh.edu/osha/cliff-meidl.html](http://www.csudh.edu/osha/cliff-meidl.html) for full article.

Periodical



California State University Dominguez Hills  
College of Extended & International Education  
1000 E. Victoria St.  
Carson, CA. 90747



\*\*\*\*\*5-DIGIT 90747 #  
UNIVERSITY LIBRARY  
CAL STATE UNIV DOMINGUEZ HILLS  
UNIVERSITY LIBRA  
800 E VICTORIA ST  
CARSON CA 90747-0003

**Important Compliance Information for:**

- Managers and Supervisors
- HR Professionals and Training Managers
- Business Owners
- Environmental, Health and Safety Professionals



**QUARTERLY CAL/OSHA UPDATE**

Meeting Dates	Meeting Type	City
Feb. 5	Weekday	Carson
May 13	Weekday	Carson
Aug. 12	Weekday	Carson
Nov. 4	Weekday	Carson

For more information visit  
<http://www.csudh.edu/osha/quarterly-update.html>

Register Online at [www.csudh.edu/OSHA](http://www.csudh.edu/OSHA) or call 888-4LA-OSHA



Los Angeles County • Orange County  
Riverside • Las Vegas