

# LUNCH -AND- LEARN

**Student Fees**

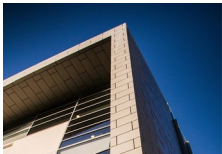
---

December 7, 2020

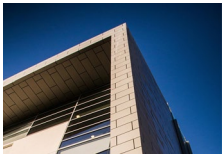
**CSUDH**

# Agenda

- I. Overview of Fees
- II. Categories of Fees
- III. Q&A

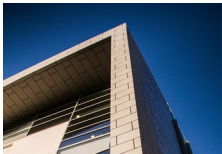


# OVERVIEW OF FEES

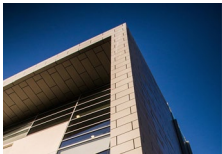


# Fee Overview

- There are five categories of Student Fees in the California State University system
- Each category of fee has its own uses and rules as to how the fee is adjusted
- Understanding these fees is an important step to ensure we're maximizing our resources to fully support our students

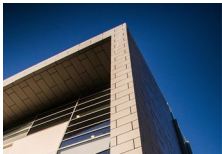


- There are several laws and policies that dictate how fees are structured within the CSU:
  - California Education Code
  - California Code- Title 5
  - CSU Student Fee Policy – Executive Order 1102 (EO 1102)
    - Encompasses 1993 CSU Board of Trustees State University Fee Policy
    - Continues the practice of seeking the advice of Student Fee Advisory Committees combined with student referenda and/or alternative consultation processes

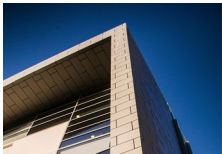


# Fee Oversight

- Each campus submits an annual Student Fee Report to the Chancellor's Office- this report requires us to share any changes in student fee amounts, and report any high balances
- The Budget Office regularly monitors fund balances for ALL student fees
- The Student Fee Advisory Committee reviews fund balances for Category II and III fees on an annual basis

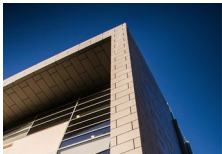


# CATEGORIES OF FEES



# Category I Fees

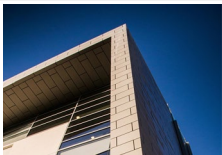
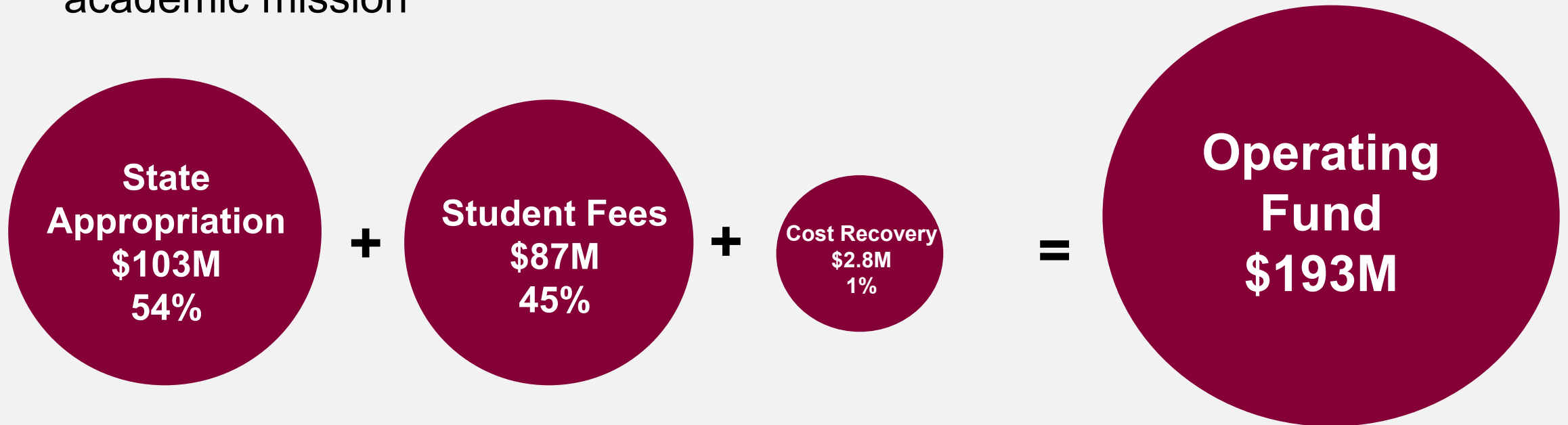
- Category I Fees are systemwide mandatory fees, which are charged at the same rate and for the same purpose at all campuses
- These fees are controlled by the Board of Trustees. The Chancellor or Presidents cannot establish or adjust these fees unless specifically designated to do so by the BOT
- Examples of Category I Fees are:
  - Tuition Fee
  - Non-Resident Tuition Fee
  - Application Fee
  - Professional Program Fee





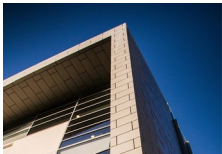
# Category I Fees

- Category I Fees make up approximately half of the Operating Fund, with the other half being funded through state appropriation
- The Operating Fund (also known as “state-side” or “AADHT”) is the fund primarily used to instruct students, and provide services associated with academic mission



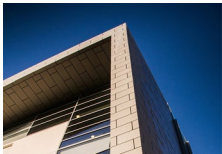
# Category II Fees

- Category II Fees are mandatory fees, which are required to attend the University, but may vary across campuses
- The Chancellor is delegated authority to *establish or adjust* these fees. Once a fee is established, Presidents are then further delegated to *adjust* these fees
  - The President is responsible for assuring that appropriate and meaningful consultation occurs before adjusting fees. This consultation may manifest itself through advisory student referendum or the alternative consultation process
- Dominguez Hills has the 5<sup>th</sup> lowest Category II fees of the 23 campuses in the CSU



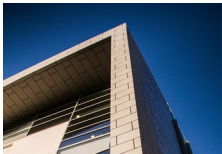
# Category II Fees

- Examples of Category II Fees are:
  - Health Services and Health Facilities Fee
  - Associated Students Fee
  - Instructionally Related Activities Fee
  - Student Union Fee
  - Student Success Fee
- Category II Fees are generally associated with self-supporting funds, which are expected to maintain fund balances to support long term needs
- Per Executive Order 994, these programs are expected to maintain reserves to support the following areas: Major Maintenance and Repair/ Capital Renovation, Working Capital, Capital Development for New Projects, and Catastrophic Events
- Functionally, these fund balances are necessary for carrying debt, pension liabilities, potential enrollment drops, planned and unplanned deferred maintenance



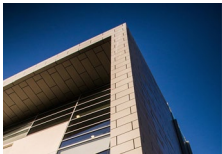
# Category III Fees

- Category III Fees are miscellaneous course fees for state-support instruction.
- The Chancellor is delegated authority to *establish or adjust* these fees. Once a fee is established, Presidents are then further delegated to *adjust* these fees
  - The President does have limited authority to establish Category III fees within a range pre-established by the Chancellor
  - Before establishing or adjusting these fees, the president must seek consultation from the campus Student Fee Advisory Committee



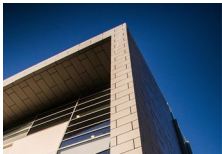
# Category III Fees

- Examples of Category III Fees are:
  - Art Studio Fees
  - Chemistry Lab Fee
  - Field Trip Fee
  - Nursing Skills Lab Fee
- Uses of course fees are dictated by Executive Order 1102, CSU Student Fee Policy
- “Miscellaneous course fees are defined as fees collected for materials, services or use of facilities used in concert with the basic complement of supplies needed for state-supported instruction”
- These fees should be expended in the same year they are collected
- Fund balances may roll if fees are collected in May/June, but not expended until the beginning of the Academic Year



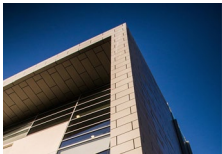
# Category IV Fees

- Category IV Fees are fees paid for services, use of facilities, or fines that are collected through state-supported operations
- The President has the authority to *establish*, *oversee*, and *adjust* this category of fees
  - In order to establish or adjust Category IV Fees, campus practice is that a university department must submit a proposal to both the President and Student Fee Advisory Committee.
- Examples of Category IV Fees are:
  - Library Overdue Fees
  - ID Replacement Fee
  - Orientation Fees
- Category IV Fees are similar to Category III in that they should generally be expended the same year they are collected.



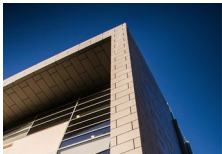
# Category V Fees

- Category V Fees are fees charged by self-support operations on campus
- The campus has the authority to *establish, oversee, and adjust* this category of fees
  - Each self-support has a different process to establish, oversee, and adjust fees
- All revenues collected must be used to support and develop new activities within the self-support fund



# Category V Fees

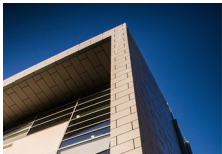
- Examples of Category V Fees are:
  - Housing Fees
  - Extended Ed Fees
  - Parking Fees
- Category V Fees are similar to Category II Fees in that they are associated with self-supporting funds, which are expected to maintain fund balances to support long term needs
- Per Executive Order 994, these programs are expected to maintain reserves to support the following areas: Major Maintenance and Repair/ Capital Renovation, Working Capital, Capital Development for New Projects, and Catastrophic Events
- Functionally, these fund balances are necessary for carrying debt, pension liabilities, potential enrollment drops, planned and unplanned deferred maintenance





# BONUS FEE CATEGORY: Category VI Fees

- There is an extra bonus fee in its own category: The Student Involvement and Representation Fee (SIRF)
- This \$2 fee is optional
- Revenue from this fee does not stay on campus, but is used to support the state-wide student representative group (CSSA)



# Q&A

