



CAMPUS TECHNOLOGY USER GROUP (CTUG)

NOVEMBER 8, 2016

LSU BALLROOM B



AGENDA

- WELCOME
- GOOD TO KNOW – C. MANRIQUEZ
- HR/SA SPLIT SCHEDULE & PROJECT UPDATE – B. CHANG
- DATA ARCHITECTURE – C. MANRIQUEZ
- ATI REPORT – M. PAYNE
- ISO UPDATE – K. BOYER



GOOD TO KNOW - EDUCAUSE

- EDUCAUSE IS A NONPROFIT ASSOCIATION WHOSE MISSION IS TO ADVANCE HIGHER EDUCATION THROUGH THE USE OF INFORMATION TECHNOLOGY

The screenshot shows the top portion of the EDUCAUSE website. At the top left is the 'EDUCAUSE' logo in white text on a dark red background. To its right is a search bar with the word 'Search' and a red arrow icon. Further right is a 'Login' link with a red circle containing the number '1'. Below the logo are four navigation links: 'RESEARCH AND PUBLICATIONS', 'CONFERENCES AND EVENTS', 'CAREER DEVELOPMENT', and 'FOCUS AREAS AND INITIATIVES'. On the right side, there is a 'VISIT EDUCAUSE.EDU' link. The main content area is titled 'Sign in to EDUCAUSE' and is divided into two sections. The first section, 'Already have an EDUCAUSE profile?', contains fields for 'Username' and 'Password', links for 'Forgot/reset your password?' and 'Forgot your username?', and a yellow 'SIGN IN' button. The second section, 'Don't have an EDUCAUSE Profile?', contains a yellow 'CREATE A PROFILE' button and a red circle with the number '2'. Below this is a 'Federated Login' section with a paragraph of text and a yellow 'LOG IN USING INCOMMON' button.

GO TO:
edUCAUSE.edu



GOOD TO KNOW - GARTNER

GARTNER IS A LEADING INFORMATION TECHNOLOGY FIRM THAT PROVIDES RESEARCH AND ANALYSIS SERVICES TO INFORM AND SUPPORT DECISION MAKING IN HIGHER EDUCATION AND OTHER INDUSTRY SECTORS. THE GARTNER CAMPUS ACCESS WEBSITE IS AVAILABLE AS AN ONLINE RESOURCE FOR FACULTY, STAFF AND STUDENTS.

Services

- › Academic Technology
- › Accessibility
- › Blackboard
- › Business Intelligence and Reporting
- › Campus Asset Rollout
- › Computer Labs
- › Consulting and Development
- › Departmental Copier Program (DCP)
- › Desktop Support
- › Document Management
- › Email
- › Enterprise Resource Planning
- › Forms
- › Gartner Campus Access
- › IT Helpdesk

GO TO:
Services/Gartner Campus Access &
login via MyCSUDH





HR/SA SPLIT SCHEDULE

- SUBMITTED OUR CAMPUS PREFERENCES
- OUR FIRST CHOICE IS TO START MAY 2017 & GO-LIVE NOV 6, 2017
- FINAL SCHEDULE BY THANKSGIVING
 1. **NOV 6, 2017**
 2. **OCT 30, 2017**
 3. **NOV 13, 2017**
 4. **NOV 20, 2017**
 5. **OCT 9, 2017**



PROJECT UPDATES

- ABSENCE MANAGEMENT
 - ESTIMATED GO-LIVE FEB 2017
- FIM IDENTITY MANAGEMENT
 - AUTO PROVISION & DISABLING OF ACCOUNTS
 - ENSURE ACCURACY AND TIMELY UPDATES OF HR & POI DATA
- LIAISON & LIBRARY ALMA/PRIMO
 - GO-LIVE SUMMER 2017
- PROJECT PRIORITIES
 - MANY PROJECTS IN PROCESS AND IN PIPELINE



CURRENT DATA DASHBOARD

ACCESS



- For Faculty & Staff
- Specifically Chairs & Associate Deans
- Populated via PeopleSoft forms



DASHBOARDS



- Admissions
- Degrees
- Enrollment
- Student Success
- Financial Aid

Coming Soon

- Financials
- In Development*
- Finance Budget/Resource
- Course Demand



FUTURE PLANS/DW



- Transactional Data
- Longitudinal Data
- Institutional Data Model



CSUDH has made MAJOR progress in the past two years, beginning with the DW.

CURRENT DATA BI DASHBOARD (SCREENSHOT)



California State University DOMINGUEZ HILLS Business Intelligence

Search All [Advanced] [Help] [Sign Out]

Home Catalog Favorites Dashboards Open Signed In As

Get Started...

BI Data Warehouse User Guides & Tutorials

- Data Warehouse Overview
- Logging into Data Warehouse
- Using Filters to Search Information
- Using Page Options to Save Filters and Create Bookmark Links
- Exporting Information from Data Warehouse
- Using Acton Links: Print, Refresh, and Return

Recent

Dashboards

- Enrollments - Enrollments by T...
Open | More
- Student Success - Cohort Detail
Open | More
- Degrees - Degree Awarded by ...
Open | More
- Student Success - Cohort Com...
Open | More

More Dashboards

Others

- Program Action Desc Detail
Open | Edit | More
- Drill Degree
Open | Edit | More

Most Popular

- Enrollments - Enrollments by T...
Open | More
- Enrollments - FTE by Term
Open | More
- Admissions - Program Action R...
Open | More
- Student Success - Cohort Com...
Open | More
- Enrollments - Course Enrollme...
Open | More
- Enrollments - Daily enrollment
Open | More

Recent

- Enrollments - Enrollment...
- Degrees - Degree Award...
- Program Action Desc Det...
- Admissions - Program Ac...
- Drill Degree
- Student Success - Cohort...

Most Popular

- Enrollments - Enrollment...
- Admissions - Program Ac...
- Enrollments - Course Enr...
- Enrollments - FTE by Term
- Student Success - Cohort...
- Enrollments - Daily enrol...

CURRENT DATA DASHBOARD : EAB VS BI COMPARISON



PS Finance DW



Educational Advisory Board

- Student-specific data
- Student snapshot

ANSWERS:
How likely is Student X to graduate on time?

Business Intelligence Data Warehouse

- Global overview
- Operational/research data

ANSWERS:
What is happening @ CSUDH?



IRAP REPORTS

FOR USE BY

- Advisors
- Faculty
- Administrators

FOR USE BY

- Administrators
- Department Chairs
- Grant writers



A & R REPORTS
(moving to Dashboard)

Campus Labs



PeopleSoft

S4

BEST FOR

- Seeing Trends
- Setting Benchmarks
- Targeting Interventions

BEST FOR

- Multi-college collaboration
- Operational/Process Changes
- Statistical Analyses



PS REPORTS

Optimizing Student Success

END TO END DESIGN FOR NEW DATA MODEL

Instructional

Financial /
Commercial

Enrollment

Co-
Curricular

Research

Admin

Activity
(Event /
Experience)

Collection
Method
(Transaction)

Assessment
(Variables)

Output
(R - D - A)

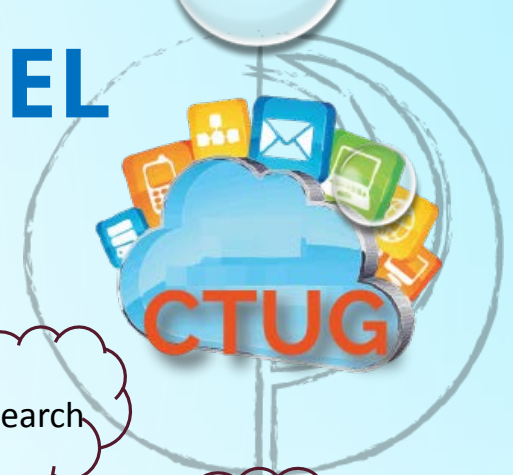
Research

Grants

Financial

Publications

CTUG



UNDERSTANDING THE LARGER INFORMATION ECOSYSTEM



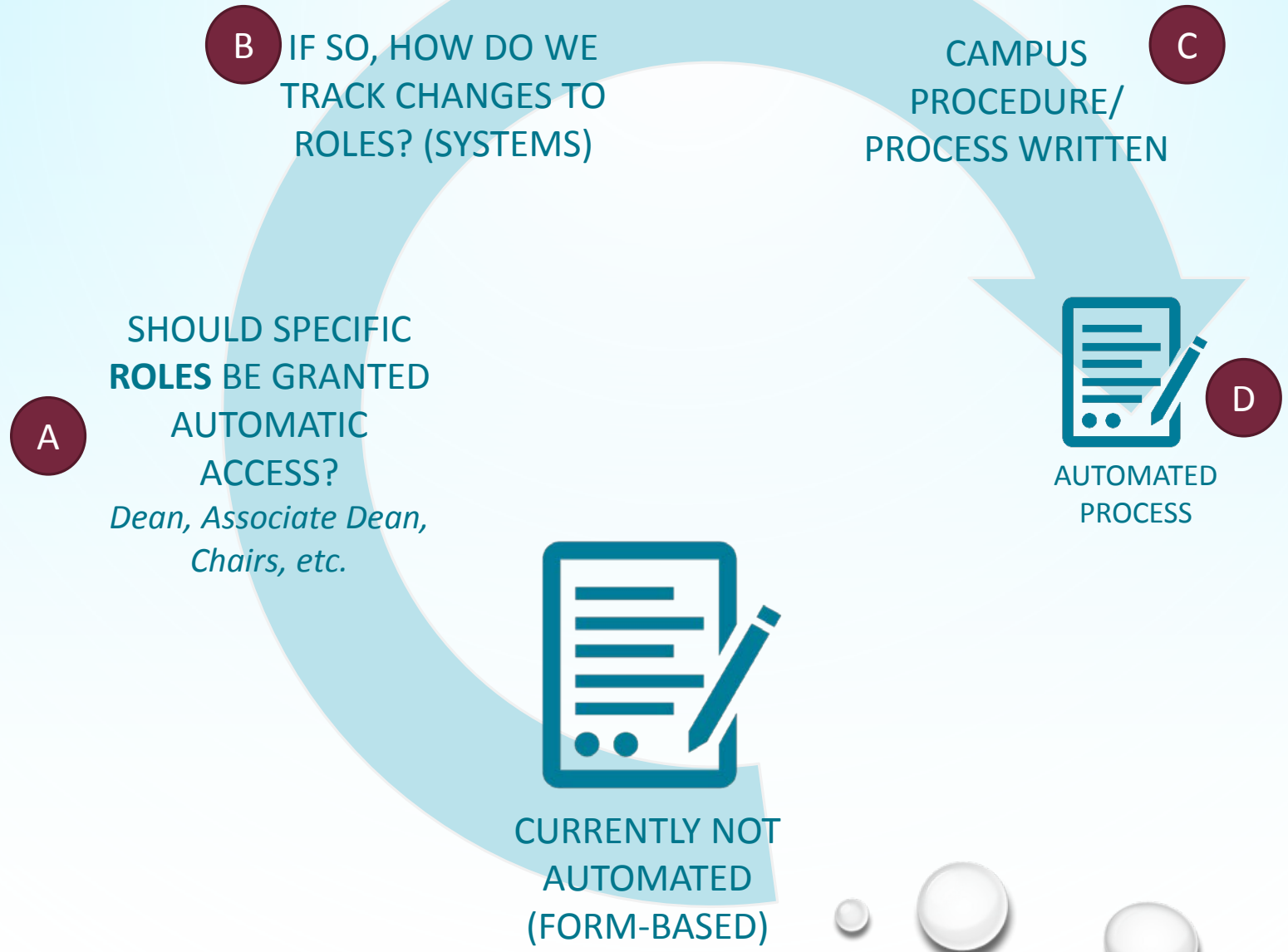
WHAT WE KNOW

- Global data is growing and is systems driven
- Increasingly technical and must be developed in a uniform way

New data sources coming in (Big Data)

Correct and appropriate data, viewed from the same lens

ACTIVITY A: DISTRIBUTED ACCESS PROCESS



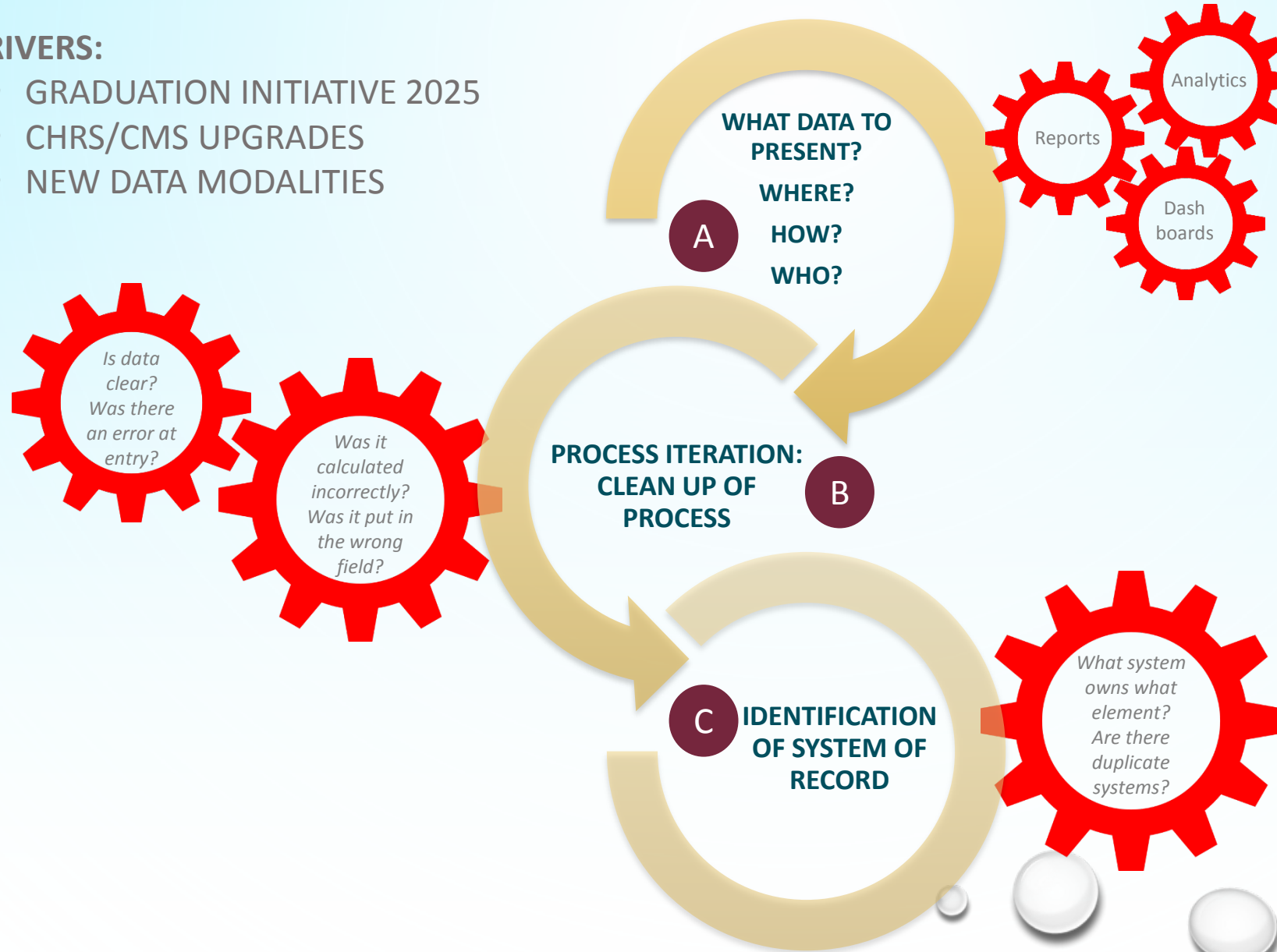
CURRENTLY NOT AUTOMATED (FORM-BASED)

ACTIVITY B: DETERMINE DESIRED OUTCOMES



DRIVERS:

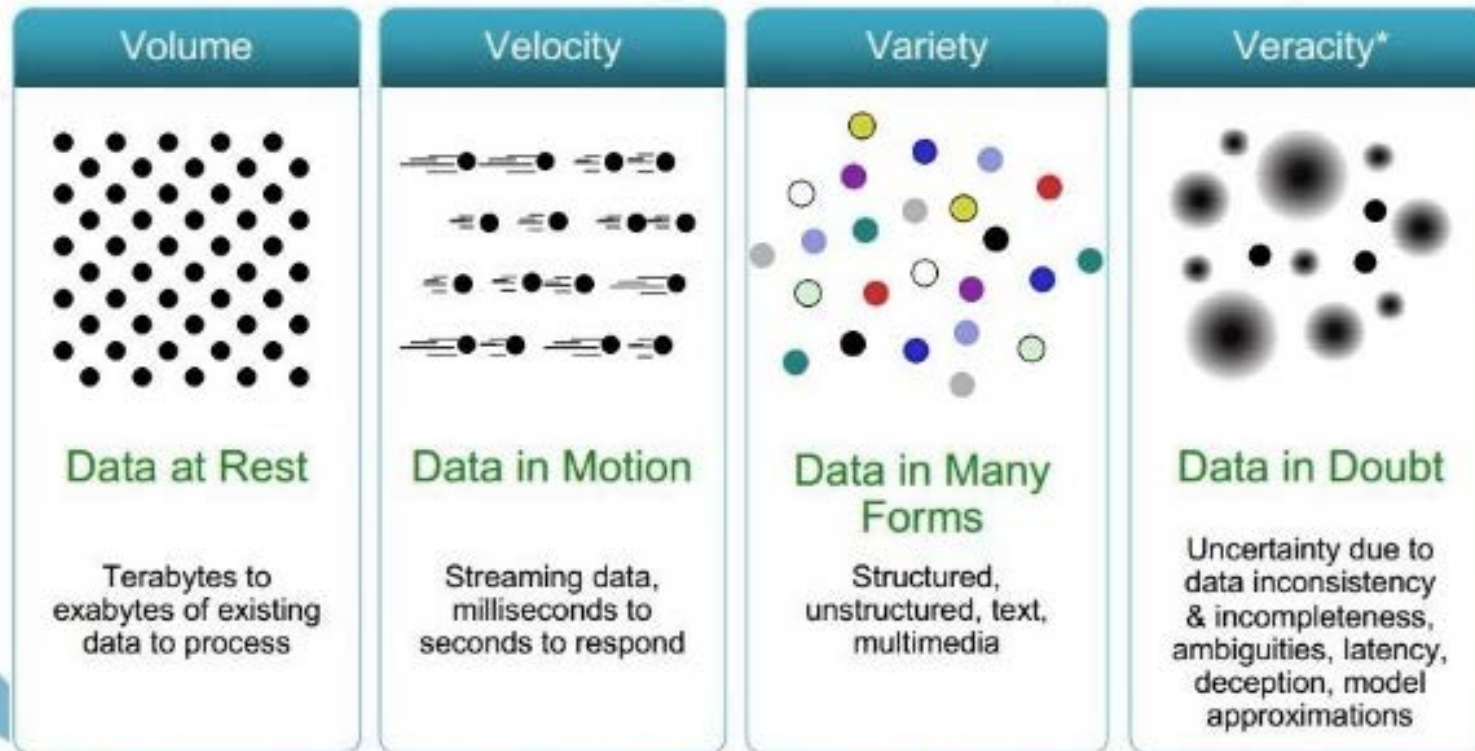
- GRADUATION INITIATIVE 2025
- CHR/S/CMS UPGRADES
- NEW DATA MODALITIES



ACTIVITY C: NEW DATA MODALITIES



4 V's of Big Data



ATI ANNUAL REPORT TO THE CHANCELLOR'S OFFICE FOR 2015-16



WEB ACCESSIBILITY ACCOMPLISHMENTS

- WEB LEADS NOTIFYING EDITORS/CONTRIBUTORS TO CATALOG DIGITAL MEDIA CONTENT.
- TRAINING ON DIGITAL CONTENT ACCESSIBILITY FOR ALL NEW CAMPUS WEB EDITORS/CONTRIBUTORS
- CAMPUS RESOURCE WAS ADDED TO SUPPORT AND MANAGE WEB EVALUATION PROCESS.
- LARGE NUMBER OF TRAINED CAMPUS EDITORS/CONTRIBUTORS LEAD TO A SIGNIFICANT IMPROVEMENT IN THE OVERALL LEVEL OF COMPLIANCE ACROSS ALL CAMPUS WEBSITES.
- A NEW PROCESS GUIDE DEVELOPED AND DISTRIBUTED TO NEW EDITORS/CONTRIBUTORS FOR DESIGNING WITH ACCESSIBILITY IN MIND.
- REGULAR MONTHLY WEB ACCESSIBILITY LEAD'S MEETING ATTENDANCE INCREASED OVER 50% FROM THE PREVIOUS ACADEMIC YEAR.

ATI REPORT – INSTRUCTIONAL MATERIALS ACCOMPLISHMENTS



- E-TEXTBOOKS POSTED ON THE FREE E-TEXTBOOKS WEBSITE
 - ([HTTP://WWW4.CSUDH.EDU/LIBRARY/SERVICES/EBOOKS/INDEX](http://www4.csudh.edu/library/services/ebooks/index))
- 144 NEW STUDENTS ESTABLISHED SERVICES WITH THE STUDENT DISABILITY RESOURCE CENTER (SDRC),
 - TOTAL ACTIVE STUDENTS TO 638 IN FALL 2016
- ADOPTED FORMAL POLICY REQUIRING ALL COURSE SYLLABI TO BE AVAILABLE WITHIN THE LMS
- FACULTY USING FOLLETT DISCOVER TO SUBMIT BOOK ORDERS AND INSTRUCTIONAL MATERIALS
 - INCREASE IN COMPLIANCE OF MORE THAN 15%.



ATI REPORT – INSTRUCTIONAL MATERIALS ACCOMPLISHMENTS - CONT'D

- DEVELOPED ATI TRAINING VIDEOS
 - POSTED ON ACADEMIC TECHNOLOGY WEBSITE TO FACILITATE TRAINING ON DEMAND.
- FDC INCLUDES ACCESSIBILITY MODULE FOR EACADEMY PARTICIPANTS IN BEST PRACTICES IN TEACHING ONLINE.
 - INCOMING FACULTY PARTICIPATING IN THE FACULTY SUCCESS PROGRAM RECEIVE A SESSION WITH THE STUDENT DISABILITY RESOURCE CENTER.
- FDC SUPPORTED FACULTY PARTICIPATION IN QUALITY MATTERS WORKSHOPS
- AN ACCESSIBILITY CHECK IS RUN THROUGH ADOBE SOFTWARE WHEN THE LIBRARY STAFF POST MATERIALS THAT ARE REQUESTED TO BE PLACED IN COURSE RESERVES.
- THE PROGRAM REVIEW PANEL CHECKS AND VERIFIES COMPLIANCE WITH SDRC GUIDELINES.

ATI REPORT - PROCUREMENT ACCOMPLISHMENTS



- NO PROGRESS DUE TO MANAGEMENT TURNOVER AND STAFF VACANCIES IN PROCUREMENT.
- ADOPTING THE CSU E&IT PROCUREMENT PROCESS THAT MANY CSU CAMPUSES HAVE IMPLEMENTED AND PLAN TO HAVE IT FULLY IMPLEMENTED AT CSUDH IN THE COMING YEAR.
- P-CARD PROGRAM WAS TEMPORARILY TURNED OVER TO ACCOUNTING DUE TO MANAGEMENT TURNOVER AND VACANCIES IN PROCUREMENT.
 - IT APPROVAL IS REQUIRED FOR ALL IT GOODS AND SERVICES PROCURED VIA P-CARD.

PM 2016-01 INFORMATION SECURITY



THE CAMPUS HAS ADOPTED PM 2016-01 - INFORMATION SECURITY

- SUPERSEDES CSUDH PM 2009-13
- ALIGNS THE CAMPUS TO ALL OF THE CSU INFORMATION POLICIES AND STANDARDS
- DEFINES THE CAMPUS INFORMATION SECURITY PROGRAM ORGANIZATIONAL STRUCTURE AS REQUIRED BY ICSUAM 2015

REASONABLE SECURITY



- DATA BREACHES REPORTED TO THE CALIFORNIA ATTORNEY GENERAL'S OFFICE BETWEEN 2012 TO 2015 TOTALED NEARLY 50 MILLION RECORDS OF CALIFORNIANS WITH THE MAJORITY BREACHES RESULTING FROM SECURITY FAILURES.
- SECURING INFORMATION IS THE ETHICAL AND LEGAL RESPONSIBILITY OF THE ORGANIZATIONS WITH WHICH INDIVIDUALS ENTRUST THEIR PERSONAL INFORMATION.
- THE LEGAL OBLIGATIONS TO SECURE PERSONAL INFORMATION INCLUDE AN EXPANDING SET OF LAWS, REGULATIONS, ENFORCEMENT ACTIONS, COMMON LAW DUTIES, CONTRACTS, AND SELF-REGULATORY REGIMES.
- CALIFORNIA'S INFORMATION SECURITY STATUTE REQUIRES BUSINESSES TO USE "REASONABLE SECURITY" PROCEDURES AND PRACTICES.

ATTORNEY GENERAL'S RECOMMENDATIONS



- THE 20 CONTROLS IN THE CENTER FOR INTERNET SECURITY'S CRITICAL SECURITY CONTROLS IDENTIFY A MINIMUM LEVEL OF INFORMATION SECURITY THAT ALL ORGANIZATIONS THAT COLLECT OR MAINTAIN PERSONAL INFORMATION SHOULD MEET. THE FAILURE TO IMPLEMENT ALL THE CONTROLS THAT APPLY TO AN ORGANIZATION'S ENVIRONMENT CONSTITUTES A **LACK OF REASONABLE SECURITY**.
- ORGANIZATIONS SHOULD **MAKE MULTI-FACTOR AUTHENTICATION** AVAILABLE ON CONSUMER-FACING ONLINE ACCOUNTS THAT CONTAIN SENSITIVE PERSONAL INFORMATION. THIS STRONGER PROCEDURE WOULD PROVIDE GREATER PROTECTION THAN JUST THE USERNAME-AND-PASSWORD COMBINATION FOR PERSONAL ACCOUNTS SUCH AS ONLINE SHOPPING ACCOUNTS, HEALTH CARE WEBSITES AND PATIENT PORTALS, AND WEB-BASED EMAIL ACCOUNTS.
- ORGANIZATIONS SHOULD **CONSISTENTLY USE STRONG ENCRYPTION** TO PROTECT PERSONAL INFORMATION ON LAPTOPS AND OTHER PORTABLE DEVICES, AND SHOULD CONSIDER IT FOR DESKTOP COMPUTERS
- ORGANIZATIONS SHOULD ENCOURAGE INDIVIDUALS AFFECTED BY A BREACH OF SOCIAL SECURITY NUMBERS OR DRIVER'S LICENSE NUMBERS TO PLACE A FRAUD ALERT ON THEIR CREDIT FILES AND MAKE THIS OPTION VERY PROMINENT IN THEIR BREACH NOTICES. THIS MEASURE IS FREE, FAST, AND EFFECTIVE IN PREVENTING IDENTITY THIEVES FROM OPENING NEW CREDIT ACCOUNTS.

UNIFORM ELECTRONIC TRANSACTION ACT (UETA) AND GOVERNMENT CODE SECTION 16.5



- UNDER CALIFORNIA LAW, AN "**ELECTRONIC SIGNATURE**" MEANS AN ELECTRONIC SOUND, SYMBOL, OR PROCESS ATTACHED TO OR LOGICALLY ASSOCIATED WITH AN ELECTRONIC RECORD AND EXECUTED OR ADOPTED BY A PERSON WITH THE INTENT TO SIGN THE ELECTRONIC RECORD. THE UNIFORM ELECTRONIC TRANSACTION ACT (UETA) AUTHORIZES USE OF AN ELECTRONIC SIGNATURE FOR TRANSACTIONS AND CONTRACTS AMONG PARTIES IN CALIFORNIA, INCLUDING A GOVERNMENT AGENCY.
- UNDER CALIFORNIA LAW, A **DIGITAL SIGNATURE** HAS THE SAME FORCE AND EFFECT AS A MANUAL SIGNATURE. A DIGITAL SIGNATURE MAY BE AFFIXED TO ANY WRITTEN COMMUNICATION WITH THE UNIVERSITY IN WHICH A SIGNATURE IS REQUIRED SO LONG AS IT COMPLIES WITH THE REQUIREMENTS OF CALIFORNIA GOVERNMENT CODE SECTION 16.5 AND THESE STANDARDS AND PROCEDURES.

ICSUAM 8100.00 ELECTRONIC AND DIGITAL SIGNATURES



- AN **ELECTRONIC SIGNATURE** IS AN ELECTRONIC SOUND (E.G., AUDIO FILES OF A PERSON'S VOICE), SYMBOL (E.G., A GRAPHIC REPRESENTATION OF A PERSON IN JPEG FILE), OR PROCESS (E.G., A PROCEDURE THAT CONVEYS ASSENT), ATTACHED TO OR LOGICALLY ASSOCIATED WITH A RECORD, AND EXECUTED OR ADOPTED BY A PERSON WITH THE INTENT TO SIGN THE RECORD.
- A **DIGITAL SIGNATURE** IS A SPECIFIC TYPE OF ELECTRONIC SIGNATURE THAT USES CRYPTOGRAPHIC TRANSFORMATION OF DATA TO PROVIDE AUTHENTICITY, MESSAGE INTEGRITY, AND NON-REPUDIATION.

THE CLOUD



Designed by Vecteezy






- CLOUD COMPUTING SERVICES ARE APPLICATION, PLATFORM AND INFRASTRUCTURE RESOURCES THAT ARE ACCESSED THROUGH THE INTERNET.
- CLOUD SERVICES PROVIDE A WIDE RANGE OF ACADEMIC AND ADMINISTRATIVE ACTIVITIES, SUPPORTING, AMONG OTHER THINGS, COMMUNICATION; COLLABORATION; PROJECT MANAGEMENT; SCHEDULING; DATA ANALYSIS, PROCESSING, SHARING, AND STORAGE.
- THERE ARE A NUMBER OF INFORMATION SECURITY AND DATA PRIVACY CONCERNS ABOUT USE OF CLOUD COMPUTING SERVICES BY UNIVERSITY PERSONNEL, DEPARTMENTS, AUXILIARIES AND CENTERS.
- THE PURPOSE OF THIS STANDARD IS TO ALIGN WITH CURRENT OR EMERGING CSU CLOUD POLICY AND TO ENSURE THAT CSU SENSITIVE DATA IS NOT INAPPROPRIATELY STORED OR SHARED USING PUBLIC CLOUD COMPUTING AND/OR FILE SHARING SERVICES.

How to Identify

Cloud Services & Usage Guideline

CSU Protected Levels of Data PL-1, PL-2 and PL-3



FERPA Name with:	HIPAA Name with:	PII Name with:	GLBA Name with:	CREDIT CARD	Law Enforcement Records Name with:	Campus Access Credentials	Campus Financials
Grades DOB Photo Advising	Health Records or Insurance Records	Personally Identifiable Information (SSN) (Passport) (Visa)	Financial Information (Bank Accounts) (Tax Returns)	Payment Card Information	Driver's License Criminal Background	Account And Password	
PL2	PL1	PL1	PL1	PL1	PL1	PL1	PL2
Campus Attorney client communications	Employee Information Name with: (Home Address) (Home Phone) (Personal Email) (Marital Status) (Gender) (Evaluation) (Personnel Actions)	General Information publically available Publications Web					
PL2	PL2	PL3					

QUESTIONS?

