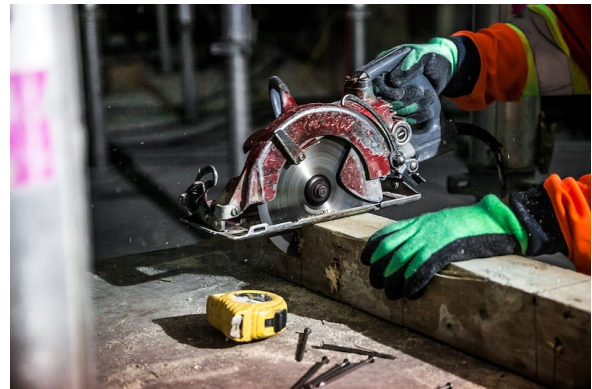


Fact Sheet Basic Safety for Power Tools

A portable tool is one that requires a power source to operate, such as electric, pneumatic, liquid fuel, hydraulic, explosive-actuated, and powder-actuated device or power supply. Power tools can be hazardous if used improperly.

Examples of regulated portable power tools include:

- Portable abrasive wheels and grinders
- Lawn mowers
- Powered drills
- Portable circular saws
- Portable belt sanding machines
- Explosive-actuated fastening tools
- Jacks
- Abrasive blast cleaning nozzles



General Safety Requirements:

Personal Protective Equipment (PPE)

- Employees using hand and power tools may be exposed to falling, flying, abrasive and splashing objects, flying dust, fumes or mists, vapors or gasses, and should be fitted with the appropriate PPE necessary to protect them from hazards.

Note: Safety eyewear, hard hats, gloves, and appropriate safety shoes are required on all construction sites.

Hearing Protection

- Hearing protection is recommended when using power tools.

Tool Maintenance

- All hand tools and portable power tools and similar equipment will be maintained regularly and kept in a safe working condition.

Housekeeping

- Floors will be kept as clean and dry as possible to prevent slips and falls.
- Extension cords will be used as needed for temporary power only and must be stored properly when not in use.
- Waste will be disposed of in the appropriate receptacles.
- All work areas and walkways will be well lit.

Power tool general precautions include the following:

- Keep all tools in good condition with regular maintenance
- Use the right tool for the job
- Examine each tool for damage before use
- Operate tools according to the manufacturer's instructions
- Provide and use the proper PPE
- Ensure cords are not a tripping hazard