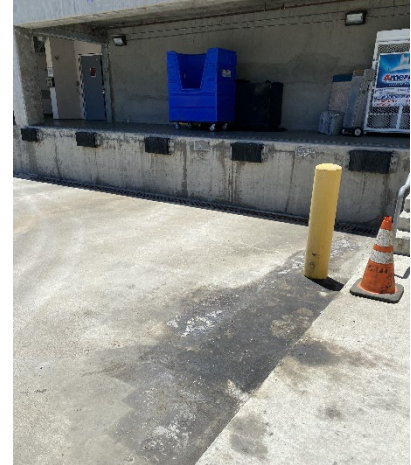


Loading Dock Management BMP Fact Sheet



Pollutants of Concern

Vehicle Fluids	Oil & Grease
Equipment Fluids	Trash & Debris
Hazardous Materials	Non-Storm Water Discharge (NSWD)



Purpose

To prevent or reduce the discharge of pollutants to storm water from outdoor loading/unloading of materials.

Application

Material loading/unloading activities and loading dock area management.

Practices

- Keep loading dock areas clean and clean up spills promptly.
- Train employees on proper spill response procedures in accordance with the Spill Prevention, Control, and Cleanup BMP.
- Prevent wash water or other non-storm water discharges from going into storm drains in the loading dock area.
- Regularly inspect equipment for leaks and place drip pans under leaking equipment.
- Load/unload only at designated loading areas.
- Limit the exposure of materials with a potential to contaminate storm water.
 - Store outdoor materials with the potential to contribute pollutants to storm water runoff under cover and off the ground (e.g., on pallets) to prevent exposure to storm water runoff.
- **DO NOT** store dumpsters/roll-offs over storm drains.
- Avoid loading and unloading during wet weather, whenever possible.
- Design new loading docks to include a covered and bermed enclosure for trash and recycling dumpsters.

Frequency and Maintenance

- Regularly inspect equipment for leaks and needed repairs. Repair or replace leaking components as needed.
- Dry sweep the loading dock area regularly, minimizing any surface washing/rinsing.
- Maintain spill response material (e.g., spill kit) in a location that is easily accessible and known to personnel. Inspect spill kit materials on a regular basis (e.g., monthly) and replace as needed.
- Schedule trash/recycling collections frequently enough to prevent dumpsters from overfilling.

Training

Maintenance, shops, trades, and theater staff that perform outdoor work activities that could contribute pollutants to the campus storm water system must take the Annual HAZCOM Training which includes spill prevention, control, and cleanup; SDS's; and hazardous materials and waste management.

Additional Information

- Refer to Spill Prevention, Control, and Cleanup BMP procedures
- Refer to Metal Tracking BMP procedures
- Refer to Equipment and Vehicle Maintenance BMP
- Refer to Non-Storm Water Discharges BMP
- The Environmental Health & Safety (EH&S) department can assist with used absorbent or hazardous waste management questions: **(310) 243-3000** or ehs@csudh.edu