

CSUDH

CALIFORNIA STATE UNIVERSITY, DOMINGUEZ HILLS

**SOUTH BAY
ECONOMIC
FORECAST
CONFERENCE**

**THURSDAY
10.25.2018**



A REGION IN TRANSITION:

THE FUTURE IS HERE



Shan Sundar



SMART CITY

**Meeting the changing needs of tomorrow's
Citizens..
that is**

Every service is **now & **n**ow**

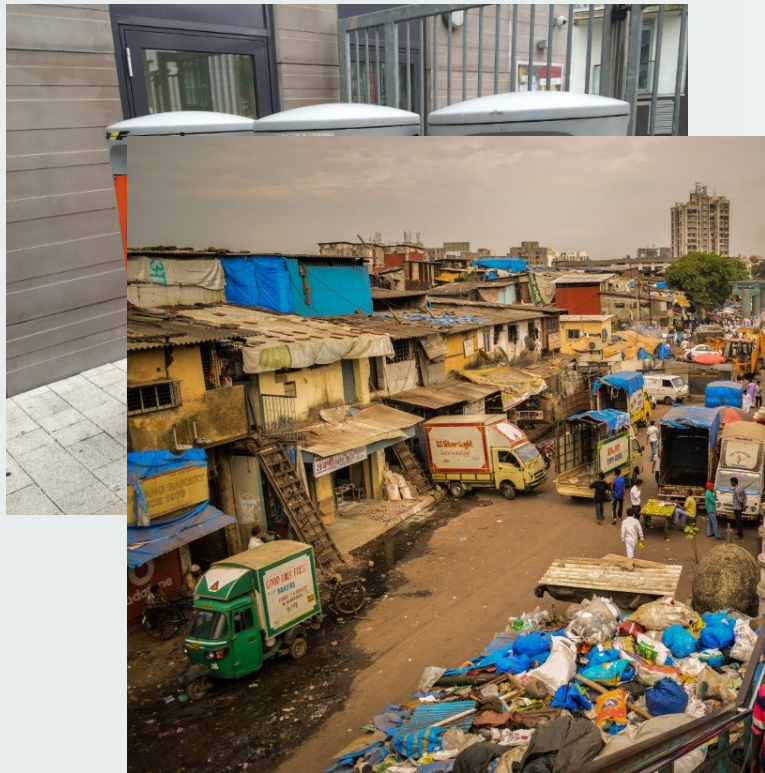




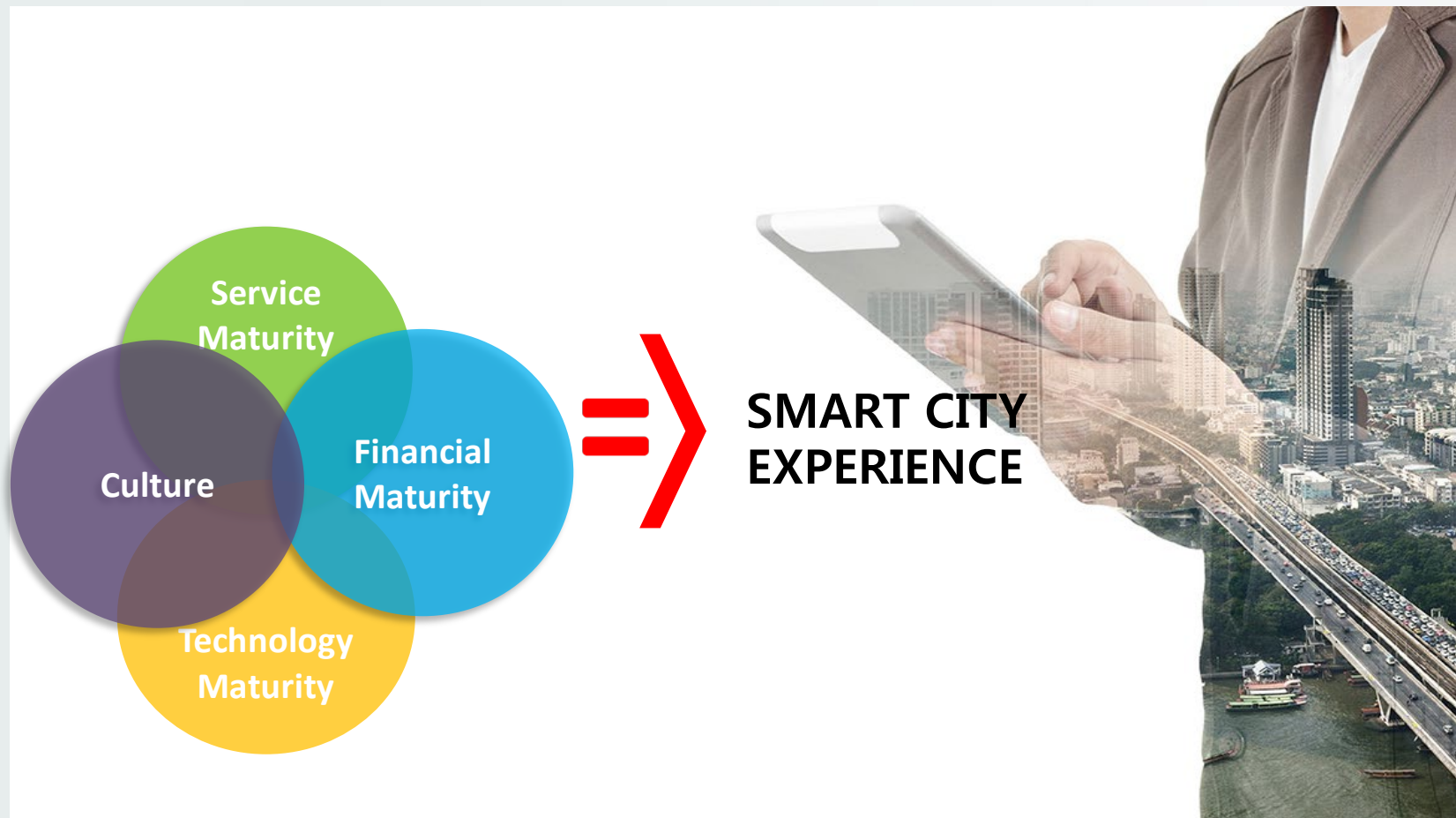
Cultural and Local Impacts

Smart Garbage bins

Enforcement



The Foundation of Municipal Maturity Model



Municipal Maturity Model - Framework

1

Informational

- Foundational governance
 - Reduce foot traffic to city hall
 - Workflow
 - Seamless GIS (2D)
 - Layers of data & attribute representation

2

Transactional

- Online Citizen Services
- Web, Mobile portals
- Mapping services
- LUD Planning & Management
- Financial transactions

3

Interactive

- GIS 3D surface and subsurface modeling
- Citizen interact complaint management
- SCADA System
- Security
- Parking services
- Emergency response services

4

Transformational

- SMART and Proactive
- Predictive modeling
- Real time response
- Automated Asset tracking and asset planning
- Reliability based asset maintenance
- Smarty Security systems including
 - Video Analytics
 - Automated Risk management

Smart Cities: Trends and Challenges

Urbanization

Around 1 million people per week move to urban areas
75% of world's population (6 Billion) will live in cities by 2050
Cities have to meet UN 2030 sustainable development goals

Modernization

Obsolete & outdated infrastructure inadequate to meet demands of today or tomorrow
Provide quality life and facilities to meet evolving needs of citizens, from youngest to oldest
Matching of expectations across socio economic fabric

Improving Competitiveness

Protect and increase revenue to sustain & invest
Changing priorities, expectation and technological advancements
Requirements for improved processes, SERVICE NOW

Thank you

